



# Install Instructions

## For 1 5/8" Corrugated Connectors

### Materials



- CC-DF-A7
- CC-DM-A7
- CC-DF-L7
- CC-DM-L7
- CC-DM-LH7
- CC-DF-LH7
- CC-DF-V7
- CC-DM-V7
- CC-DF-EC7
- CC-DM-EC7
- CC-DF-JA7
- CC-DM-JA7
- CC-DF-RFA7
- CC-DM-RFA7



Hack Saw



Compressed Air & Pick



SP-158 Prep/Strip Tool with Coring Bit/Pins



TQ-114-F18 Torque Wrench



HCG-FRAMESET-158

HCG-CC



Power Drill

Always wear safety glasses when



Safety Glasses

With a few simple steps, PPC compression connectors can be easily and consistently installed on 1 5/8" cable.

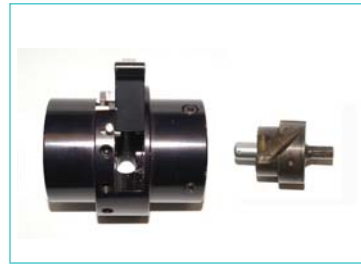
### Step #1 Prep



Straighten cable and position hacksaw in valley of corrugation and cut off the cable squarely.



Insert correct coring bit and guide pin into coring tool. Refer to the Cross-Reference Chart to select the correct coring bit/pin.



Attach coring & stripping tool to drill.



Open blade lever and lock with pin. Insert cable and actuate drill at LOW speed.



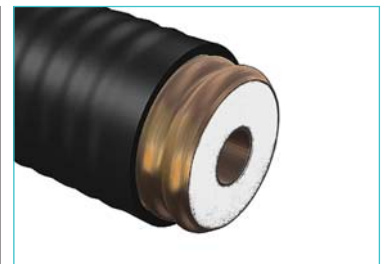
Actuate drill until outer conductor reaches fixed stop; this will remove jacket.



Release blade lever and continue at LOW speed until lever fully closes. Be sure blade is in valley.



Blade lever is shown fully closed. Open lever, lock with pin, and remove tool. Make sure any remaining cable is removed from tool.



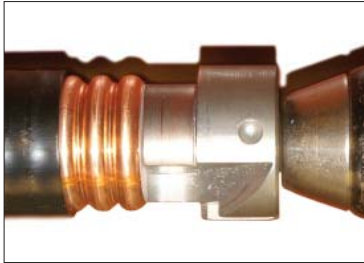
Properly stripped cable is ready for dielectric removal. Two or three visible ridges are acceptable. Cut is made in "valley".



# Install Instructions

## For 1 5/8" Corrugated Connectors

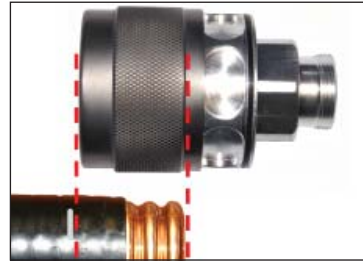
### Step #2 Install



Actuate drill at HIGH speed. Core cable to remove dielectric, using gradual forward movement, until outer conductor reaches stop.



Properly cored cable, prior to install. Use pick and compressed air as necessary to remove foam/debris as shown.



Align outer conductor with edge of knurl on connector and mark cable (using pen or marker) in line with end of connector.



Push and twist connector onto cable until it reaches the cable mark.

### Step #3 Compress



Pull/push back the insert to allow connector/cable to lay flat in frame. Make sure connector is fully seated. Press HCG tool trigger until gun cycles. Do not pull or push on tool or cable during compression.



After connector is fully compressed, connector will move away from alignment mark.



Add port seal to connector (DIN female only) to ensure a moisture proof connection. The port seal should sit in the flat area behind the threads.

**THIS STEP IS REQUIRED TO PROTECT PRODUCT WARRANTY**

### Step #4 Torque



When using the torque wrench make sure the mating connector is supported by an adjustable wrench.

Series	Torque (in-lbs.)	Hex Nut Size
N	14	3/4"
DIN	216 (18 ft-lbs.)	1 1/4"

Use proper torque based on the type of interface.

Refer to [www.ppc-online.com/wirelesstechsupport](http://www.ppc-online.com/wirelesstechsupport) for recent updates on PPC products.

DO NOT USE 'INCORRECT TOOLS



DO NOT BLOW INTO PREPPED CABLE



USE COMPRESSED AIR ONLY