

PPC QuikPass™ Fiber Entry Box

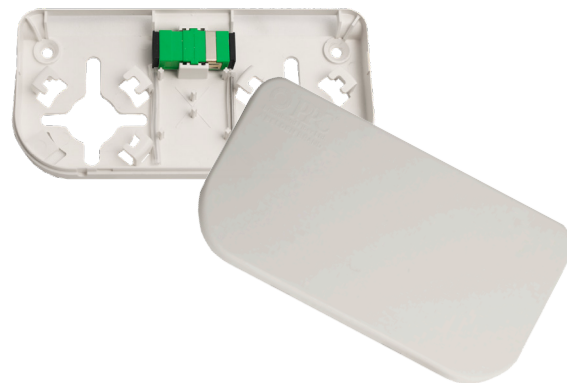


Features & Benefits

- Compact, slim profile with tamper-resistant cover
- Designed for 2mm, 3mm, 4mm and 8mm Miniflex
- Room for 1 or 2 splices or Miniflex QuikPush cables
- SC-APC Adapter, splice sleeves and mounting hardware included
- Fiber preparation tools sold separately (window cutting tool; cable / tubing cutters; wall clips)

Compatibility

- Miniflex 2mm, 3mm, 4mm and 8mm
- G.657A2 Optical Fiber
- SC/APC Connectors
- Fusion and Mechanical Splice



Applications

- Multi-dwelling units
- Commercial offices
- Schools and campuses
- Hotels and resorts

Overview

The PPC QuikPass™ Fiber Entry Box is a compact, slim profile termination box at the heart of the PPC QuikPass solution. Manufactured from a flame-retardant, low-smoke, zero-halogen, impact-resistant polymer, the box mounts to wall surfaces with two screws (provided). The PPC QuikPass Fiber Entry Box is positioned over the PPC QuikPass Miniflex® Distribution Cable and provides retaining features to hold the cable securely. 2mm, 3mm and 4mm Miniflex cable can also be used.

After window-cutting the cable, individual fibers can be pulled back and coiled into the box for termination. The PPC QuikPass Fiber Entry Box features all the necessary components to connect the subscriber to the distribution cable and offers a range of termination options including fusion splice, field-fit connectors and terminated drop cables. It even allows for pushing the fiber from the Fiber Entry Box to the Customer Terminal / Optical Network Terminal (ONT).

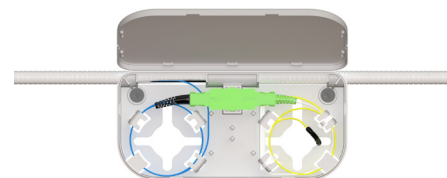
Configurations



10-1429-03B



10-1429-04B



10-1429-05B

PPC QuikPass™

Fiber Entry Box



Technical Data

Dimensions mm (in)	Operating Temperature °C (°F)	Flame Retardancy	Color
140 x 67 x 16 (5.5 x 2.6 x 0.6)	-10 to 50 (14 to 122)	UL 94: V0 / LSZH	White (RAL 9010)

Ordering Information

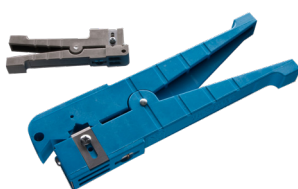
Part Number	Kit Version	Screws & Anchors	Cable Ties	40mm Splice Sleeves	SC-APC Adapter	SC-APC 1 meter 900u (A2) Pigtail
10-1429-01	Push	2	2	n/a	n/a	n/a
10-1429-02	Splice	2	2	2	n/a	n/a
10-1429-03	Pigtail	2	2	2	1	2
10-1429-04	QuikPush	2	2	1	1	1
10-1429-05	Field Fit	2	2	n/a	1	n/a
10-1429-03B	Basic + 2 Pigtails	2	2	2	1	2
10-1429-04B	Basic + 1 Pigtail	2	2	2	1	1
10-1429-05B	Basic Field Kit	2	2	2	1	n/a

ACCESSORIES

10-1427	Window Cutting Tool for 8mm
10-0291	Rotary Cable & Tubing Cutter
10-0293	Rotary Cable & Tubing Cutter for 8mm
10-0294	Tubing Cutter
10-0295	Tubing Cutter Spare Blades (10 per box)
10-1407	2mm Wall Clips (white) 200 per Kit
10-1408	3mm Wall Clips (white) 200 per Kit
10-1605	4mm Wall Clips (white) 200 per Kit
10-1409	8mm Wall Clips (white) 200 per Kit



10-1427



10-0291, 10-0293



10-0294, 10-0295



10-1407, 10-1408,
10-1605, 10-1409

These products may be protected by one or more patents • For further information, please visit: www.ppc-online.com/patents

customerservice@ppc-online.com • 1-800-800-6652 • www.ppc-online.com