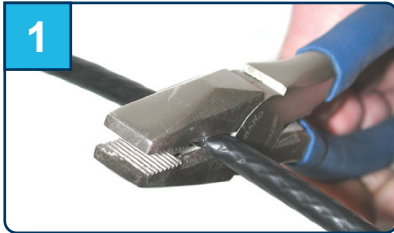
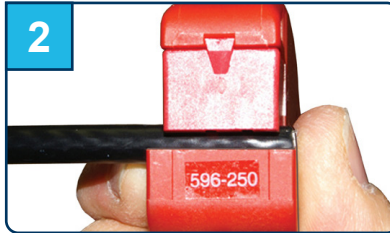


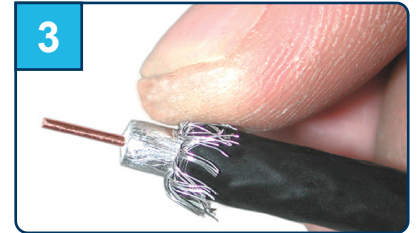
# EX<sup>®</sup> 59/6 Series with Optional SignalTight<sup>®</sup> | “XL” Extended Body



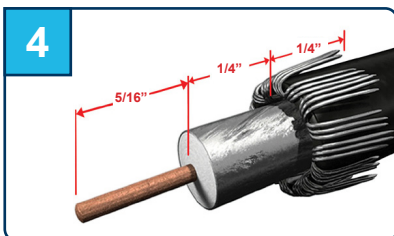
1 Cut the cable squarely.



2 Using a fixed blade with a prep tool in good condition, prepare the cable to 5/16" x 1/4" x 1/4" dimensions. Use the edge of the tool if there is no stop.



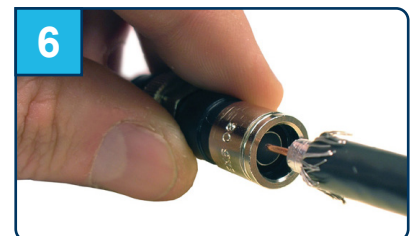
3 Fold back the braid. If using tri-shield or quad-shield cables, remove the additional foil layer and fold back the remaining braid.



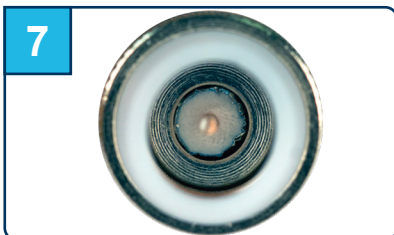
4 Ensure the cable is prepared to the proper dimensions.



5 Use the gauge on the VT tool to check the dimension of the center conductor.



6 Guide the center conductor and dielectric into the connector post. Insert the cable into the connector until the dielectric is flush within the post.



7 Here you can see the dielectric is flush within the post.



8 Properly seat the connector in the VT tool and fully compress it.



9 Install the connector onto the port and tighten to recommended torque.



EX59XL



EX6XL



EX59XLPLUS



EX6XLPLUS



VT-200

Part Number	Description
EX59XL	EX <sup>®</sup> XL Series universal compression connector for 59 series cable
EX6XL	EX XL Series universal compression connector for 6 series cable
EX59XLPLUS	EX SignalTight <sup>®</sup> XL Series universal compression connector for 59 series cable
EX6XLPLUS	EX SignalTight XL Series universal compression connector for 6 series cable
VT-200	Universal compression tool, “XL” series body

This product may be protected by one or more patents • For further information, please visit: [www.ppc-online.com/patents](http://www.ppc-online.com/patents)

customerservice@ppc-online.com • 1-800-800-6652 • [www.ppc-online.com](http://www.ppc-online.com)