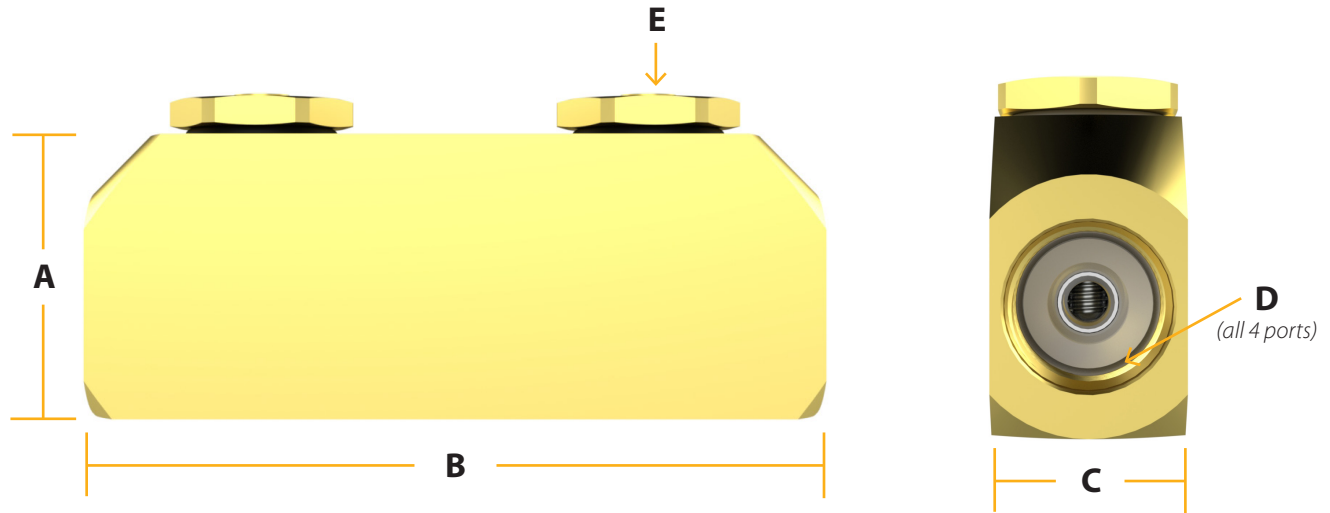


Hardline Splice Block



Mechanical Specifications

Connector	Height (A)	Width (B)	Thickness (C)	Thread Size (D)	Hex Size (E)
	(in)	(in)	(in)	(in)	(in)
CSPB	1.25	3.25	0.75	5/8-24 UNEF-2B	.75

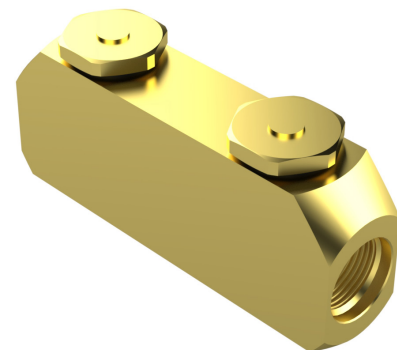
Electrical Specifications

Bandwidth	0 Mhz to 3 GHz
Impedance	75 Ohms
Return Loss	-25 dB to 1.218 GHz
Insertion Loss	-0.25 db to 1.218 GHz
Operating Voltage	90 V (at 60 Hz continuous AC)
Operating Current Rating	20 Amps (at 60 Hz continuous AC)
Operating Temperature	-40°F to + 140°F (-40°C to 60°C)

Meets or Exceeds all SCTE Specifications

Preparation & Installation Tools

- Two (2) adjustable wrenches
- Linemen's pliers or other appropriate cutters
- Appropriate cable preparation tools



This product may be protected by one or more patents • For further information, please visit: www.ppc-online.com/patents

6176 E. Molloy Rd. East Syracuse, NY 13057 U.S.A. • customerservice@ppc-online.com • 1-800-800-6652 • +1 315-431-7200 • www.ppc-online.com