

CableReady Products Overview



What Is CableReady?

CableReady is a series of protective molding products developed to meet the needs of the ever-changing communications industry.

CableReady engineers were able to develop a protective channel molding raceway that not only meets, but exceeds industry for environmental standards. CableReady has become an industry leader in developing innovative solutions to the challenges faced by installers when working with channel molding and the millions of unique properties they encounter.

Our molding is made from 26 gauge painted Galvalume steel. Galvalume lasts longer and is far more durable than hot dipped steel or plastic molding systems. All CableReady molding is guaranteed against cracking, warping, discoloring, blistering or peeling due to ultraviolet rays or harsh weather conditions for 15 years.

Security and Durability

Galvalume provides both strength and durability, with most installations never needing to be opened again. CableReady protects your cables against ice, UV rays, yard work, theft and more.

Accessories for Every Situation

A wide variety of adapters are available for each and every obstacle encountered when installing channel molding. Transitions, right angles, outside/inside corners, tee fittings, and much more are available and designed to fit without customization.

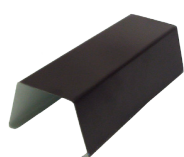
Fast and Easy Installation

Save time with our pre-drilled backing plates and mounting clips. Each size has cable tie mounting points pre-formed to secure your cable runs. Our flexible adapter provides one customizable solution for all your complex building geometry.

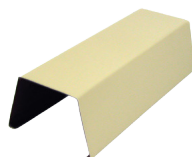


Variety of Colors and Sizes

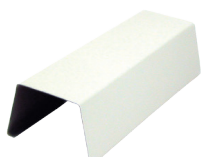
CableReady offers five colors in four sizes of molding so that you have the right match for each job. Adapters and accessories are available to match both color and size.



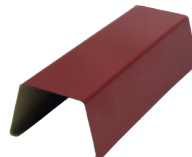
BROWN



IVORY



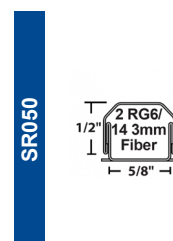
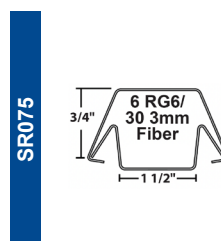
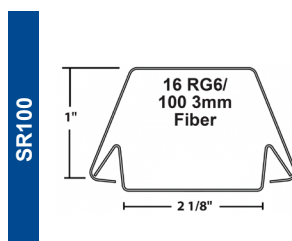
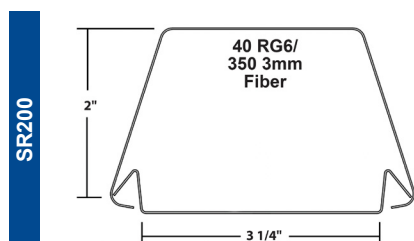
WHITE

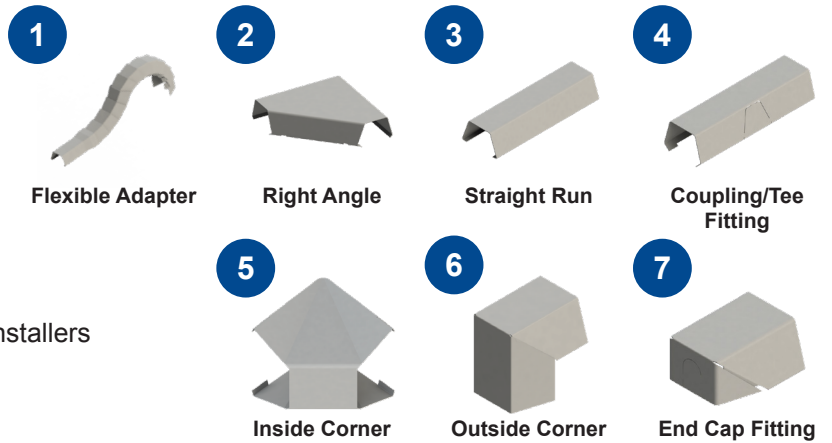
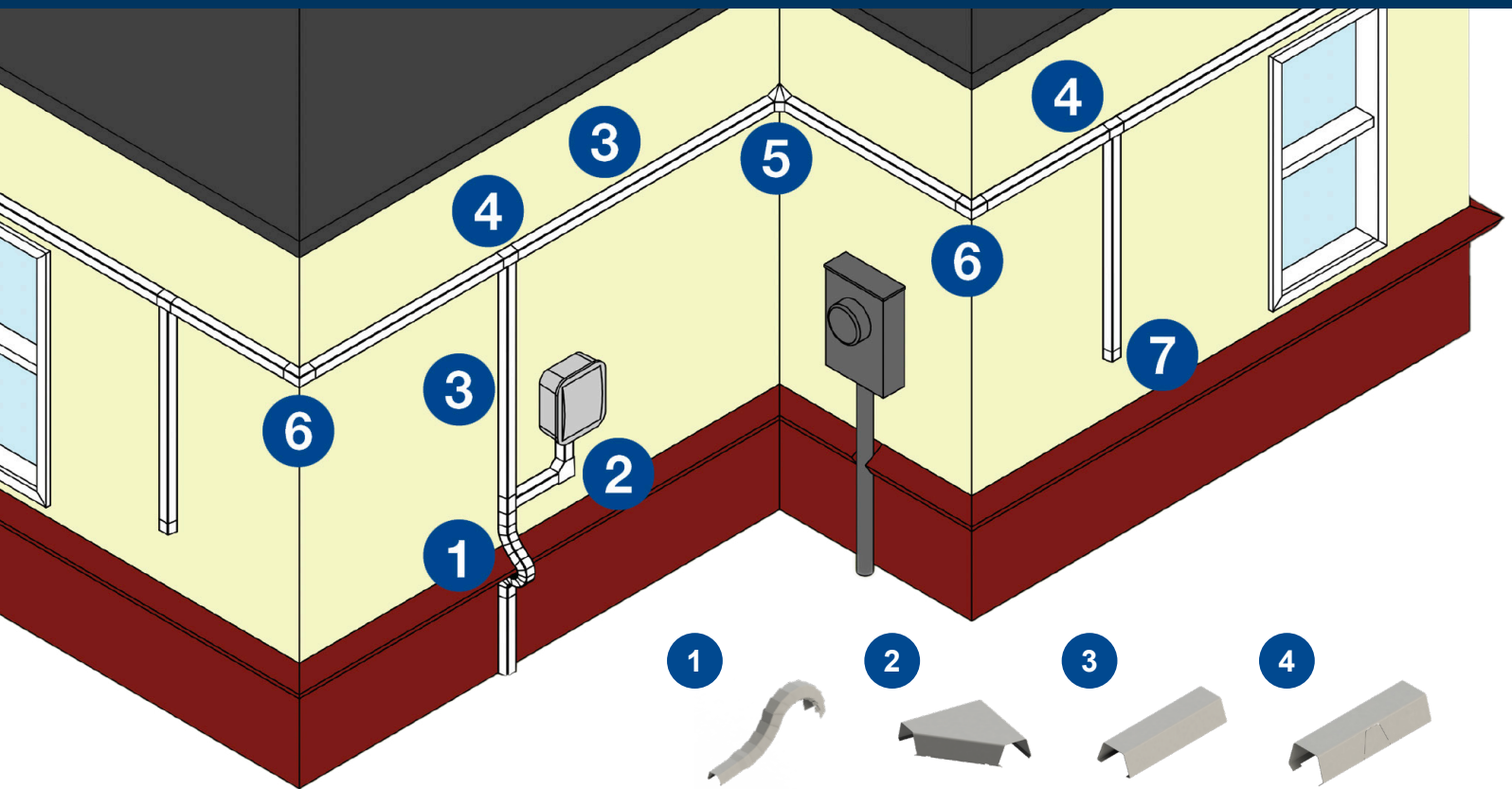


REDWOOD



LIGHT GREY



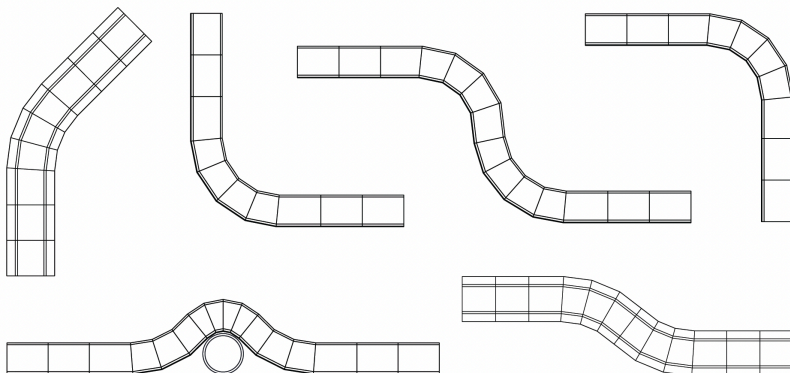
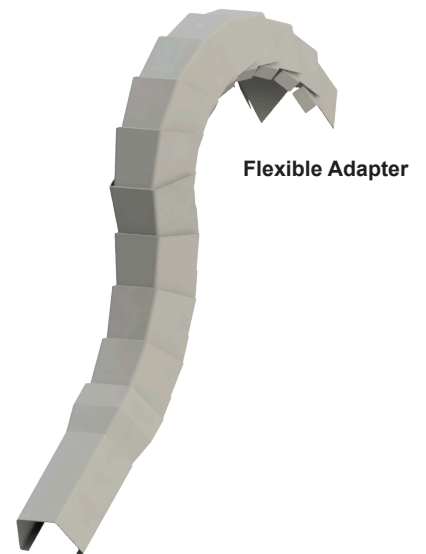


Flexible Adapter

- Innovative solution for the complexities faced by installers
- One adapter for thousands of different scenarios
- Easily customized during installation
- Twist, rotate, and pitch all in one adapter
- Optional flexible backplate available for added security

Part Number	Description	Size	Box Qty
FA075XX12	Flexible Adapter, 12" Pre-assembled	3/4"	20
FACL07512	Flexible Adapter Clip, 12" Pre-assembled	3/4"	20
FA075KITXX	Flexible Adapter Kit	3/4"	10

*Use two letter suffix to designate color when ordering
(BR = Brown, IV = Ivory, RW = Redwood, WH = White, LG = Light Gray)





r1_01082024