

# Demarcation Enclosure

Model PHB1093 | Installation Instructions



## Description:

The PPC PHB1093 demarcation enclosure is intended for outdoor use on the side of a customer premises. The cover has several locking mechanisms, including a dual-snap closure and a padlock loop. The back of the enclosure has removable windows of various sizes. The bottom has a large conduit port to fit up to 1 inch conduit, and a foam-sealed slot for exiting cable.

## Removing Variable Window:

### For 2 x 2 in Opening:

- Open the enclosure cover
- Locate the smaller opening and push the tab labeled "PUSH" out the back side of the enclosure
- While firmly gripping the tab, pull downward and away from the enclosure; Continue to pull along all four sides until the section has been completely removed

### For the 7 x 4 in Opening:

- Open the enclosure cover
- Remove the smaller 2 x 2 inch opening per the above instructions
- Locate the larger opening and push the tab labeled "PUSH" out the back side of the enclosure
- While firmly gripping the tab, pull downward and away from the enclosure; Continue to pull along all four sides until the section has been completely removed

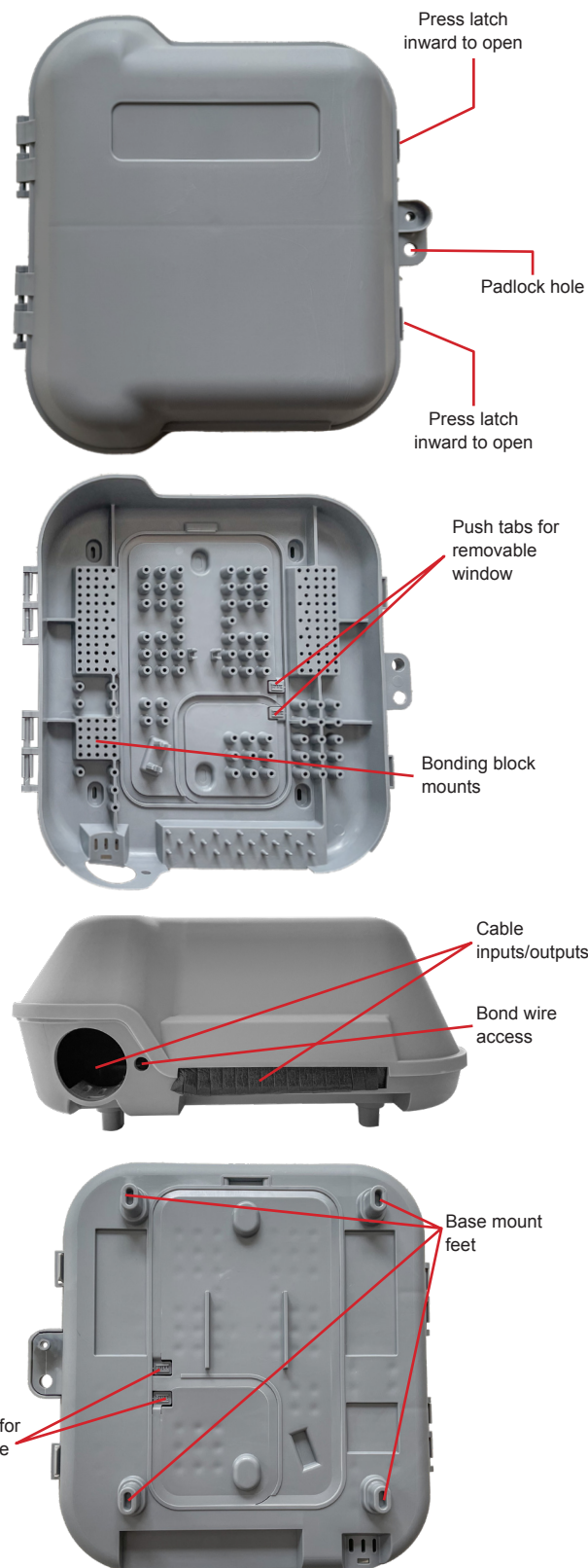
## Mounting Installation Procedure:

1. Release the snap closures by pressing inward and opening the enclosure
2. Drill a hole through each of the base mount feet
  - For wood, aluminum or vinyl siding, mount with all four holes
  - For brick & mortar, mount three points in mortar joints
3. Hold the enclosure against the wall in the desired area and mark the hole locations for mounting; If brick or block, ensure three of the hole locations are in mortar joints
4. Drill holes into the wall and insert the anchors, if required
5. Mount the enclosure
6. Install the cabling, and ground the connections and modular components, per methods outlined in Article 820-22 of the National Electric Code and by your individual Broadband/Wireless/Telecom company procedures

**Exterior:** 11.1 x 11.3 inch (L x W)

**Interior:** 10.1 x 9.4 x 3.0 inch (L x W x D)

**Box Depth:** 4.2 in | **Depth With Mount Base:** 4.9 in



# Demarcation Enclosure

Model NID1093-ACN | Installation Instructions



## Description:

The NID1093-ACN fiber demarcation enclosure provides a self-install 4-fiber splice case and a fiber management kit. The Splice Case can be installed in multiple locations inside the enclosure. Flanged or flangeless SC adapter(s) can be located inside the splice case as necessary.

## Splice Case Mounting Procedure:

1. Unpackage and open the Splice Case.
2. Secure the Splice Case base to the enclosure base with two wood screws provided.
3. Route and install fiber splice(s) inside the Splice Case.
4. If necessary, connect SC fiber connector(s) to SC adapter(s) inside the Splice Case.
5. Snap the Cover onto the Splice Case.

