

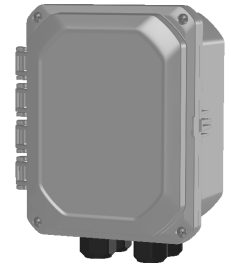
Medium & Large Terminal Hand-off Box Installation Instructions



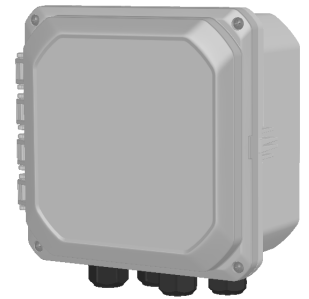
Overview

PPC's Medium and Large Terminal Hand-off Boxes are designed to accept industry standard LGX adapter panels and devices used in outdoor environments. The compact form factor of this terminal makes it an ideal choice for small cell fiber connections either on a pole, on a panel, or in a subsurface application. The easily removable LGX bracket saves time for installation, test, and maintenance compared to similar solutions.

PPC Part #	Description
E2P1A1B1C1D1NJ1-61	Medium light gray terminal with LGX bracket, (4) cable glands, slack cable management clips
E2P2A1B1C1D1NJ1-61	Medium light gray terminal with LGX bracket, (4) cable glands, slack cable management clips, LGX mount panel with (6) dual LC adapter
E2P3A1B1C1D1NJ1-61	Medium light gray terminal with LGX bracket, (4) cable glands, slack cable management clips, LGX mount panel with (12) dual LC adapter
E3P1A1B1C1D1NJ1-61	Large light gray terminal with LGX bracket, (4) cable glands, slack cable management clips, and additional spool
E3P2A1B1C1D1NJ1-61	Large light gray terminal with LGX bracket, (4) cable glands, slack cable management clips, and additional spool, LGX mount panel with (6) dual LC adapter
E3P3A1B1C1D1NJ1-61	Large light gray terminal with LGX bracket, (4) cable glands, slack cable management clips, and additional spool, LGX mount panel with (12) dual LC adapter
SSE-PMB	Metal pole mount bracket kit for the Medium Terminal
SSE-PMBL	Metal pole mount bracket kit for the Large Terminal
SSE-SMBL	Aerial strand mount kit for the Medium and Large Terminals



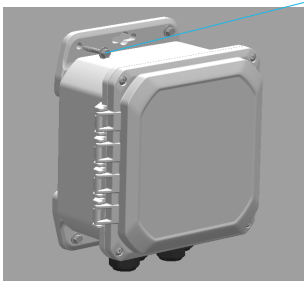
Medium Terminal
E2XXAXBXCXDXNJX-61



Large Terminal
E3XXAXBXCXDXNJX-61

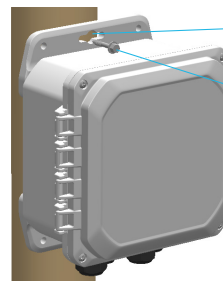
Enclosure Mounting

Wall Mount



Mounting Hardware

Pole Mount with Lag Screw

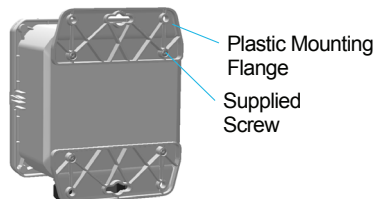


Center Mounting Key Slot

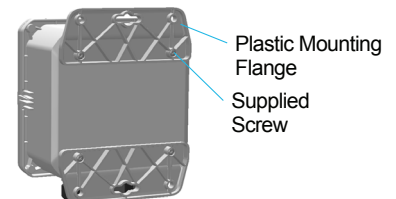
Mounting Hardware

1. Install plastic mounting flanges with supplied screws
2. Measure distance of enclosure's four corner holes
3. Drill pilot holes
4. Loosely install top screw
5. Level enclosure horizontally and vertically
6. Tighten top screws securely
7. Install bottom screws at outer holes
8. Do not overtighten screws as this may cause damage to plastic mounting flanges

1. Install plastic mounting flanges with supplied screws
2. Measure distance of enclosure's center mounting key slots
3. Drill pilot holes
4. Install top lag screw at top center key slot
5. Level enclosure horizontally and vertically
6. Install bottom lag screw at bottom center key slot
7. Do not overtighten screws as this may cause damage to plastic mounting flanges



Plastic Mounting Flange
Supplied Screw



Plastic Mounting Flange
Supplied Screw

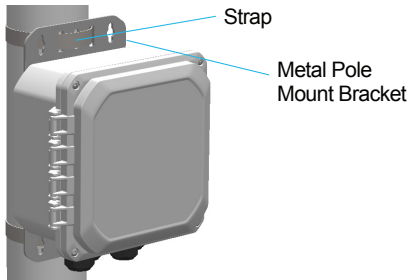
These products may be protected by one or more patents • For further information, please visit: www.ppc-online.com/patents

Medium & Large Terminal Hand-off Box Installation Instructions

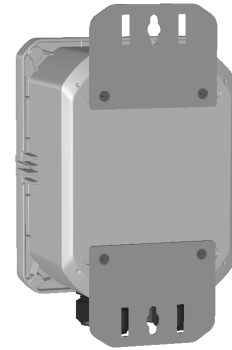


Medium Terminal Mounting with Accessory Kit SSE-PMB

Pole Mount with Straps



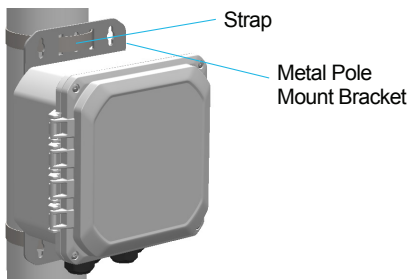
1. For metal pole mount option, install metal pole mount brackets to enclosure using four flat head screws
2. Loosely install top and bottom stainless steel bands through enclosure slots and around pole
3. Tighten top band securely
4. Level enclosure horizontally and vertically
5. Tighten bottom band securely



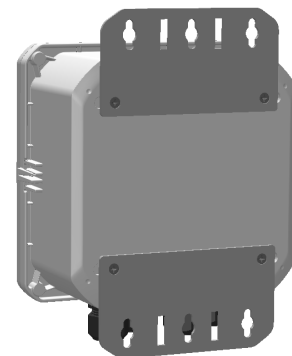
Mount two metal brackets with four screws

Large Terminal Mounting with Accessory Kit SSE-PMBL

Pole Mount with Straps



1. For metal pole mount option, install metal pole mount brackets to enclosure using four flat head screws
2. Loosely install top and bottom stainless steel bands through enclosure slots and around pole
3. Tighten top band securely
4. Level enclosure horizontally and vertically
5. Tighten bottom band securely



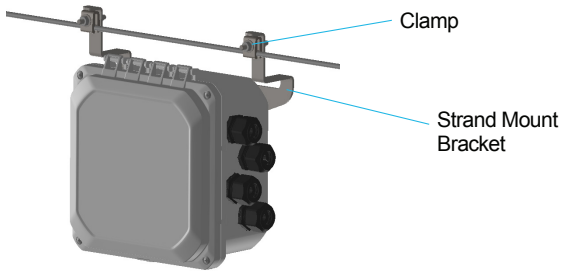
Mount two metal brackets with four screws

Medium & Large Terminal Hand-off Box Installation Instructions

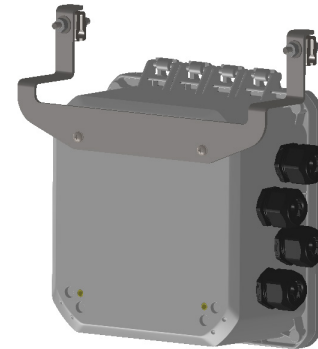


Medium & Large Terminal Mounting with Accessory Kit SSE-SMBL

Aerial Strand Mount with Clamps



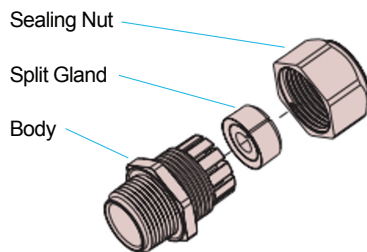
1. For aerial strand mount option, install strand mount bracket to enclosure using two screws
2. Loosen clamp nuts and place over aerial strand
3. Tighten clamp nuts securely



Mount two metal brackets with four screws

Cable Installation

1. Remove cable gland sealing nut
2. Remove rubber split gland from inside cable gland body
3. Pass the connectors and cable through cable gland sealing nut
4. Open split gland at the split and place onto the cable between breakouts with the chamfered side facing the sealing nut
5. Pass the connectors and cable through gland body
6. Connect cable inside enclosure and route slack through clips
7. Tighten cable gland sealing nut to 80-85 in lbs [9.0-9.6 Nm]



(Enclosure and mounting nut not shown)

