

# Mini Terminal Hand-off Box | Installation Instructions



## Overview

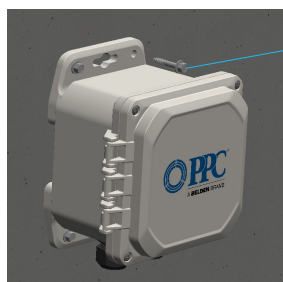
PPC's Mini Terminal Hand-off Box is designed to accept industry standard LGX adapter panels and devices used in outdoor environments. The compact form factor of this terminal makes it an ideal choice for small cell fiber connections either inside a pole, on a panel, or in a subsurface application. The easily removable LGX bracket saves time for installation, test, and maintenance compared to similar solutions.



PPC Part #	Description
E1P1A1B1C0D0NJ1-61	Light gray terminal with LGX bracket, (2) cable glands, slack cable management
E1P2A1B1C0D0NJ1-61	Light gray terminal with LGX bracket, (2) cable glands, slack cable management, LGX mount panel with (6) dual LC adapters
SSE-PMB	Pole mount bracket kit
SSE-SMB	Strand mount bracket kit

## Enclosure Mounting

### Wall Mount



Mounting Hardware

1. Measure distance of enclosure 4 corner holes
2. Drill pilot holes
3. Loosely install top screw
4. Level enclosure horizontally and vertically
5. Tighten top screws securely
6. Install bottom screws at outer holes
7. Do not overtighten screws as this may cause damage to plastic mounting flanges

### Pole Mount with lag screw



Center Mounting Key Slot

Mounting Hardware

1. Measure distance of enclosure center mounting key slots
2. Drill pilot holes
3. Install top lag screw at top center key slot
4. Level enclosure horizontally and vertically
5. Install bottom lag screw at bottom center key slot
6. Do not overtighten screws as this may cause damage to plastic mounting flanges

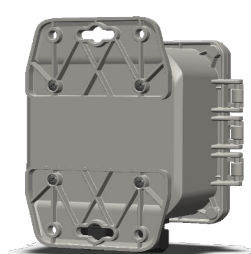
### Pole Mount with Straps (Accessory Kit SSE-PMB)



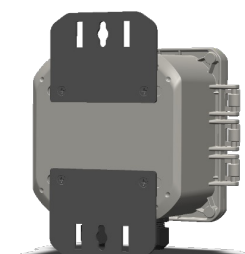
Strap

Metal pole mount bracket

1. For pole mount option, remove plastic mounting brackets
2. Mount metal pole mount brackets to enclosure using four flat head screws
3. Loosely install top and bottom stainless-steel bands thru enclosure slots and around pole
4. Tighten top band securely
5. Level enclosure horizontally and vertically
6. Tighten bottom band securely



Remove two plastic brackets and four screws



Mount two metal brackets with four screws

These products may be protected by one or more patents • For further information, please visit: [www.ppc-online.com/patents](http://www.ppc-online.com/patents)

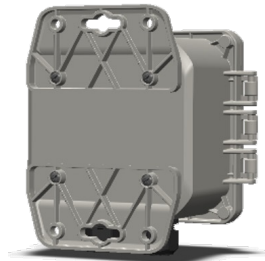
# Mini Terminal Hand-off Box | Installation Instructions



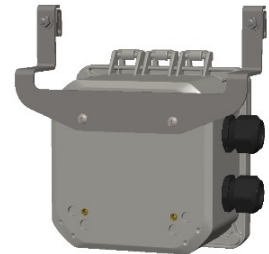
## Aerial Strand Mount with Clamps (Accessory Kit SSE-SMB)



1. For aerial strand mount option, remove plastic mounting brackets
2. Install strand mount bracket to enclosure using two screws
3. Loosen clamp nuts and place over aerial strand
4. Tighten clamp nuts securely

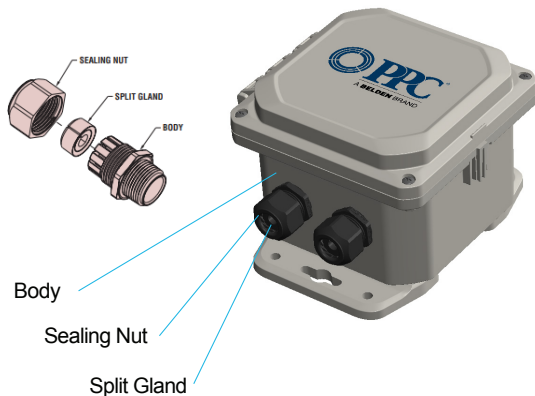


Remove two plastic brackets and four screws



Install strand mount bracket with two screws

## Cable Installation | Cable Glands



1. Remove cable gland sealing nut
2. Remove rubber split gland from inside cable gland body
3. Pass the connectors and cable through cable gland sealing nut
4. Open split gland at the split and place onto the cable between breakouts with the chamfered side facing the sealing nut
5. Pass the connectors and cable through gland body
6. Connect cable inside enclosure and route slack through clips
7. Tighten cable gland sealing nut to 80-85 in lbs [9.0-9.6 Nm]