

PPC QuikPass™ Installation Instructions



PPC QuikPass™ Installation Instructions



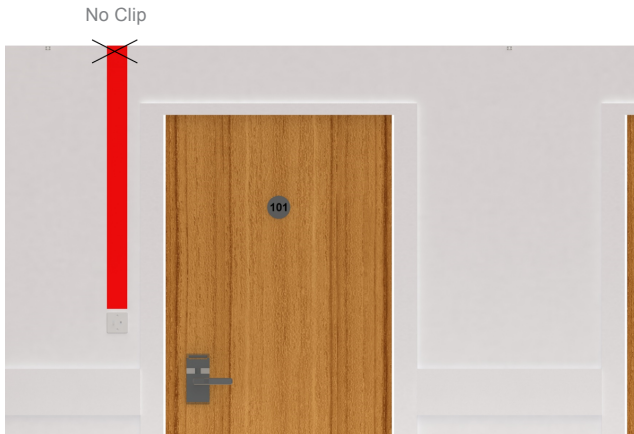
Table of Contents

Page	Installation Step
3-4	Fixing the Wall Clips
4-6	Installing the Miniflex® Distribution Cable
7-9	Mounting the Fiber Entry Box
9	Terminating Fiber in the PPC QuikPass Entry Box
10-11	A. Splicing Pigtail to Connectorized Drop Cable
11-12	B. Splicing on Pigtails
13-14	C. Splicing Distribution Cable Fiber to Drop Cable Fiber
14-15	D. Pushing Fiber to the Customer Terminal

PPC QuikPass™ Installation Instructions



Fixing the Wall Clips



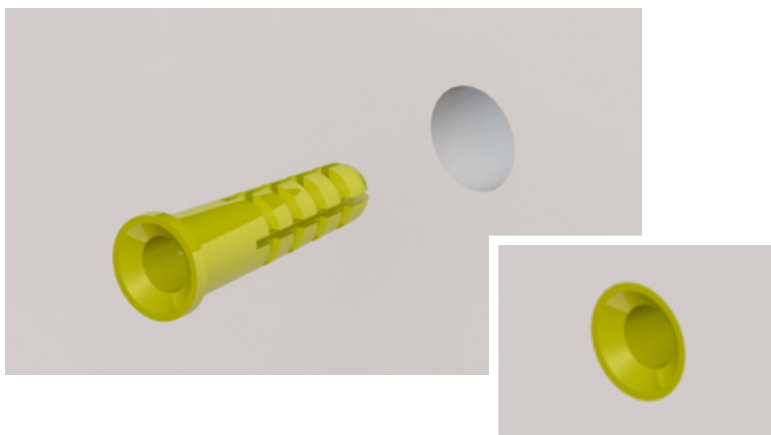
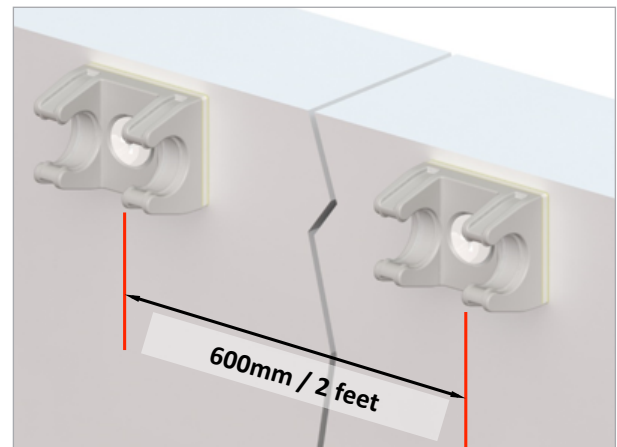
◀ Installing the Miniflex® Distribution Cable can be more efficient if the wall clips are first fixed to the wall surface.

Ensure that there is no wiring or utility piping beneath the wall surface where the cable is to be mounted.

► Measure and mark the positions for the clips, ensuring that there is a clear path without obstacles for the cable to run along. A chalk line can be useful to provide a neat and linear route.

Where the Fiber Entry Boxes are to be located (typically above or close to door entrances), the cable clips are not required.

Evenly distribute the clips using national/regional building regulations to determine the permissible space interval between clips. The recommended spacing is 600mm (approx. 2 feet).



◀ To mount clips, first drill 5mm holes in the wall surface. Next, insert screw wall plugs, ensuring that they are flush with the wall surface.

Note: Cleaning the wall surface after drilling to remove dust/debris will ensure the best possible adhesion for wall clip adhesive pads.

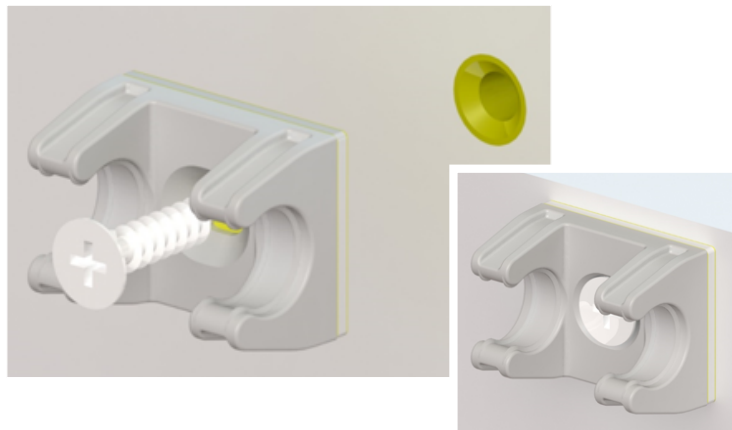
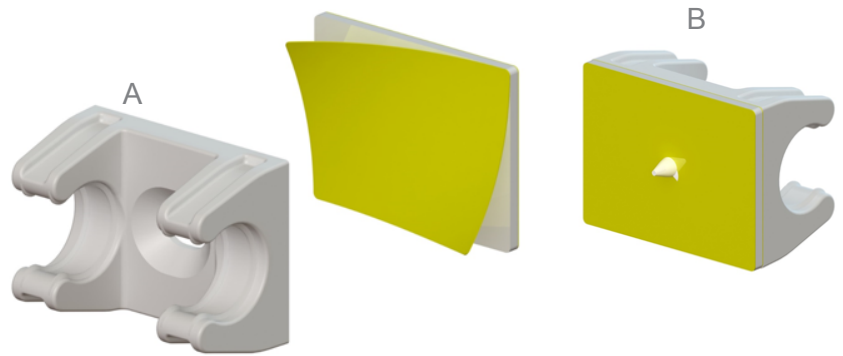
PPC QuikPass™ Installation Instructions



Fixing the Wall Clips (cont)

- ▶ Fix the double-sided adhesive pads to the clips by removing the protective backing paper (A) from one side of the pad and pressing firmly to back of clip.

Next, pierce a screw through the center hole of the clip and peel away the remaining piece of backing paper from the adhesive pad. (B)



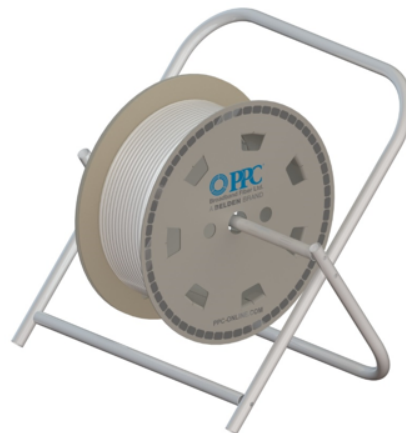
- ◀ Line the screw up with the pre-inserted wall plug and stick the clip to the wall, ensuring that it is level.

Press firmly against the wall and secure the clip by tightening the screw. Do not overtighten.

For surfaces unsuitable for drilling (e.g. some ceramics), it may be possible to reduce the clip spacing/intervals by 50% and use the adhesive pad only.

Installing the Miniflex® Distribution Cable

- ▶ Mount the cable onto a suitable pay-off stand. Avoid adding twists to the cable by uncoiling it over the spool flanges.



PPC QuikPass™ Installation Instructions



Installing the Miniflex® Distribution Cable (cont)

► To prevent sag, apply slight tension to the cable between spans. For aesthetics, it is recommended that the print line be positioned facing toward the ceiling, unless building regulations require cable markings to be clearly visible.



◄ On occasions when the grooves in the Miniflex Distribution Cable cannot be satisfactorily aligned with the retention features in the cable clips, it is possible to adjust the clip position 1-2mm by loosening the screw, relocating and then retightening the screw.

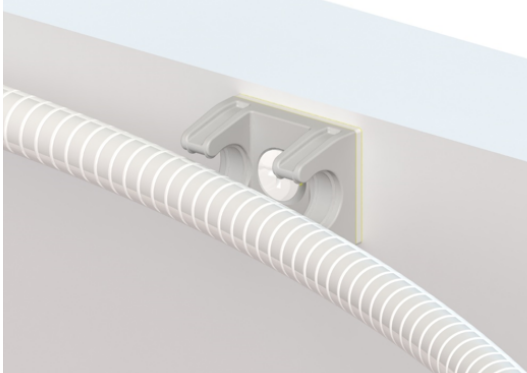


▼ **For Stationary reel deployments:**
The payoff stand should be positioned at one end of the corridor and the cable unreeled towards the opposing end.

PPC QuikPass™ Installation Instructions



Installing the Miniflex® Distribution Cable (cont)



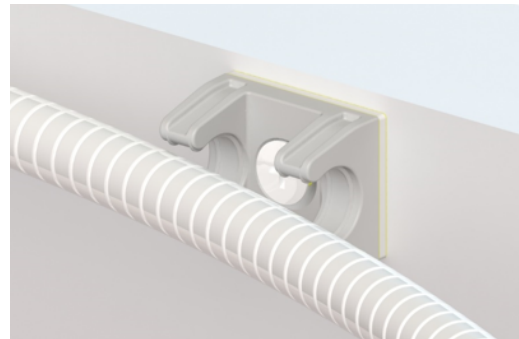
◀ Fix the cable at the end furthest from the payoff stand by pressing it into the wall clip. The grooves on the Miniflex Distribution Cable should align with features in the clip to resist cable slip.

Ensure that sufficient cable slack (typically 2-3 meters) is left for splicing.

▶ **For Moving reel methods:**

Starting at one end of the corridor, uncoil several meters of cable and begin fixing it to the wall by pressing it into the wall clips.

Ensure that sufficient cable slack (typically 2-3 meters) is left for splicing.



◀ Periodically move the payoff stand along the hallway several meters and repeat the process until the routing is complete.

Ensure that sufficient cable slack (typically 2-3 meters) is left for splicing into the distribution box before cutting the cable from the reel.



PPC QuikPass™ Installation Instructions



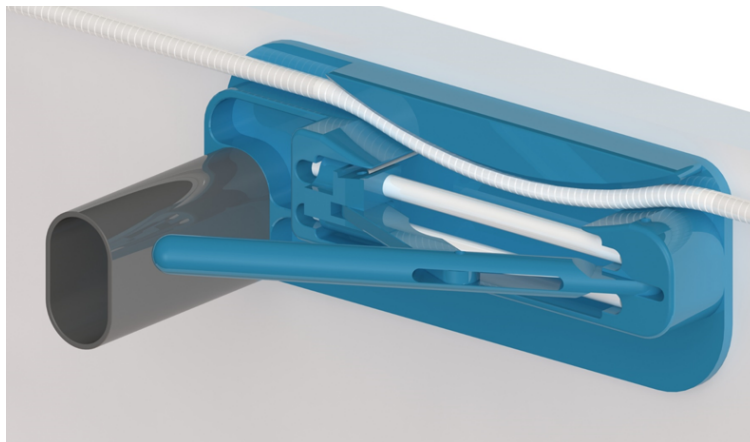
Mounting the Fiber Entry Box



◀ The Fiber Entry Box is mounted over the Miniflex Distribution Cable at the point of entry transition between corridor and dwelling. This is typically above or close to the door.

Before the box can be fixed to the wall, the window cut must be made in the cable.

▶ Remove the front cover of the box and trial fit it over the cable in the desired location. Through the desired window cut slot, mark the left-most point of the cable. This can be on either the left or right window slot according to the direction that the fiber is being pulled back.



◀ With the box removed, slot the cable into the window cutting tool so that the marked position is in the center of the tool throat.

It may be necessary to remove the cable from the adjacent wall clips to allow easy fitment into the cutting tool.

PPC QuikPass™ Installation Instructions

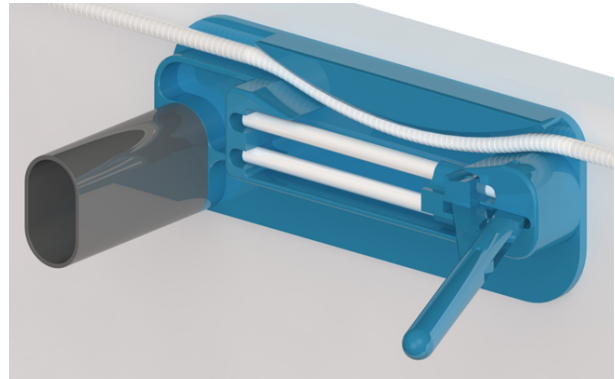


Mounting the Fiber Entry Box (cont)

- ▶ Ensure that the cable is firmly seated in the tool before sliding the level of the tool to enact the window cut.

Carefully remove the cable from the tool. If the cable has a residual bend from being placed in the tool, gently flex it in the opposite direction to help straighten it back.

TIP: Keep the cable off-cut, it makes a useful pick tool for accessing the 900µm fiber.

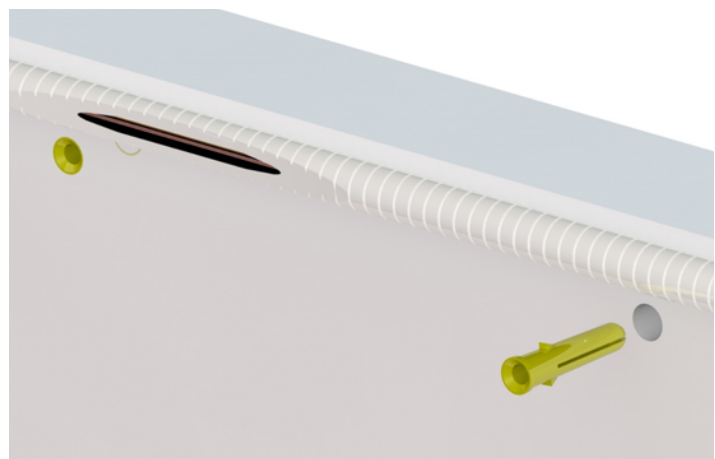


- ◀ Reposition the Fiber Entry Box over the window cut and mark the position of the two mounting holes. Use a spirit level if necessary to ensure that the box is level.

Mark the two wall mounting positions through the screw holes.

Note: To minimize the potential for dust and debris inside the terminal, the Fiber Entry Box should be removed before drilling.

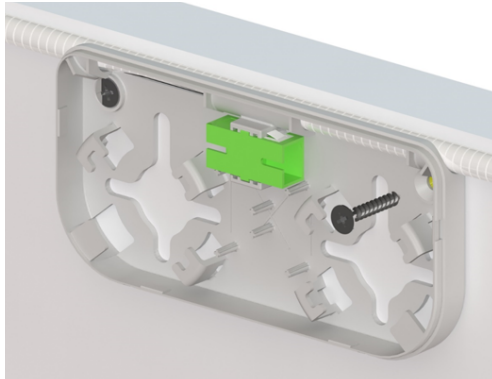
- ▶ Drill the 5mm holes in the wall surface and insert the screw wall plugs, ensuring that they are flush with the wall surface.



PPC QuikPass™ Installation Instructions



Mounting the Fiber Entry Box (cont)



◀ Reposition the Fiber Entry Box and secure with the two screws provided. Do not overtighten the screws.

▶ Refit the lid to the box. Installation is complete and the process can now be repeated for the additional subscriber Fiber Entry Boxes.



Terminating Fiber in the PPC QuikPass Fiber Entry Box

The PPC QuikPass™ solution has at least five (5) installation options for terminating the Miniflex Distribution Cable to the drop fiber. For the purpose of these instructions they can be differentiated by:

- A. Splicing Pigtail to Connectorized Drop Cable
- B. Splicing on Pigtails
- C. Splicing Distribution Fiber to Drop Cable Fiber
- D. Pushing Fiber to the Customer Terminal

It is recommended that before any fiber retraction or splicing is commenced, the cable access hole be drilled through the wall. Suggested hole sizes are:

Ø4.5mm – for 2mm Miniflex (inc. LC QuikPush)

Ø 6mm – for 3mm Miniflex (inc. SC QuikPush)

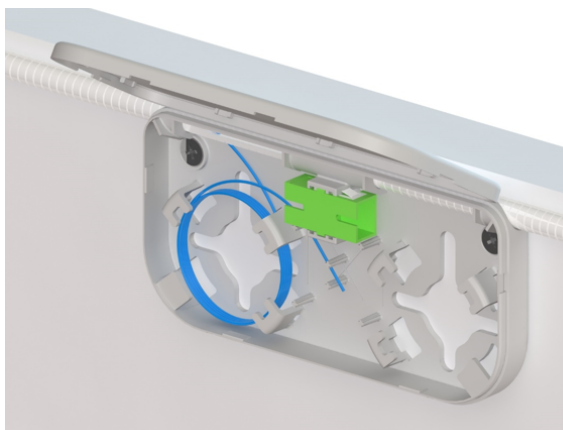
PPC QuikPass™ Installation Instructions



A. Splicing Pigtail to Connectorized Drop Cable

- ▶ Following the direction of the main distribution point, cut the 900 μ m subscriber fiber at the next available point of entry.

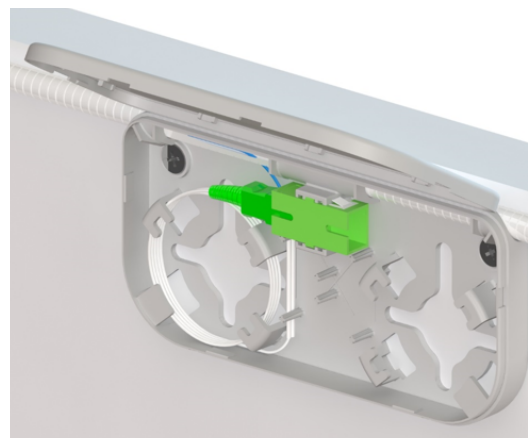
e.g. for Apartment 101, cut the fiber at the window cut inside Apartment 102's Fiber Entry Box.



- ◀ Pull back the fiber and cut to length. It is recommended to leave at least 1 meter (~3 feet) of fiber.

- ▶ Splice the 900 μ m fiber to the 900 μ m pigtail and protect the splice with heat shrink. Use only the pigtail and splice protector supplied with the Fiber Entry Box (alternate products may not be suitable).

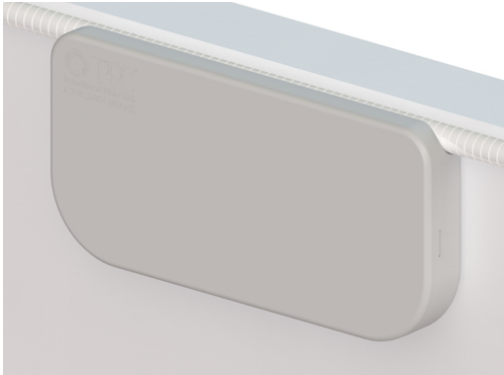
Coil the excess fiber in the appropriate left/right side storage area and adjust the coil diameters as necessary so that the splice protector can be located in the holder. Take care with the location to ensure that the fiber minimum bend radius (>7.5mm) is respected.



PPC QuikPass™ Installation Instructions



A. Splicing Pigtail to Connectorized Drop Cable (cont)

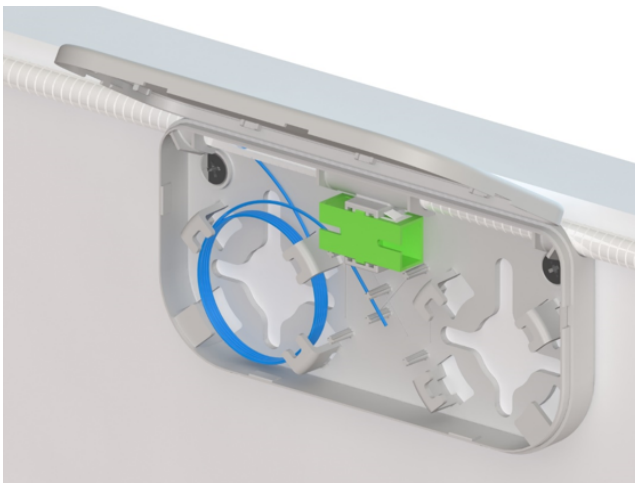


◀ Fit the cover to the Fiber Entry Box.

B. Splicing Pigtails

▶ Following the direction of the main distribution point, cut the 900µm subscriber fiber at the next available point of entry.

e.g. for Apartment 101, cut the fiber at the window cut inside Apartment 102's Fiber Entry Box.



◀ Pull back the fiber and cut to length. It is recommended to leave at least 1 meter (~3 feet) of fiber.

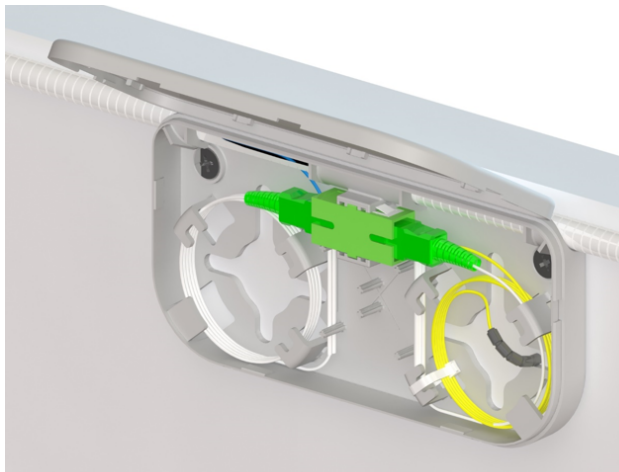
PPC QuikPass™ Installation Instructions



B. Splicing Pigtails (cont)

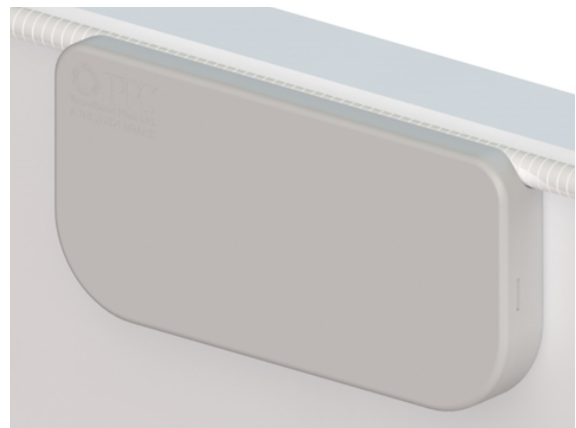
- ▶ Splice the 900µm fiber to the 900µm pigtail and protect the splice with heat shrink. Use only the pigtail and splice protector supplied with the Fiber Entry Box (alternate products may not be suitable).

Coil the excess fiber in the appropriate left/right side storage area and adjust the coil diameters as necessary so that the splice protector can be located in the holder. Take care with the location to ensure that the fiber minimum bend radius (>7.5mm) is respected.



- ◀ Splice the fiber from the Miniflex cable to the supplied 900µm pigtail and coil the fiber in the storage area, adjusting the coils as necessary so that the connector can be comfortably mated into the adaptor.

- ▶ Fit the cover to the Fiber Entry Box.



PPC QuikPass™ Installation Instructions



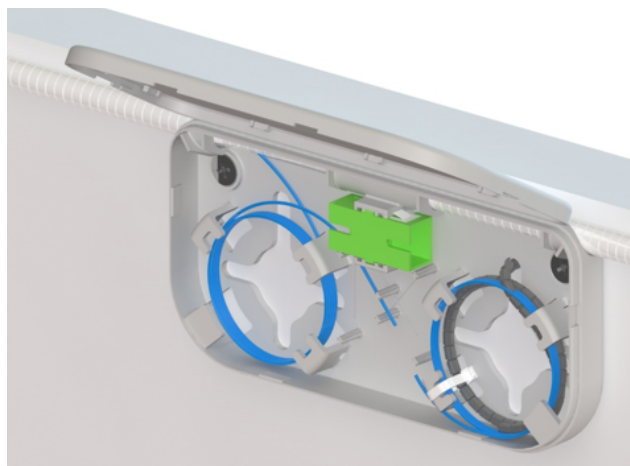
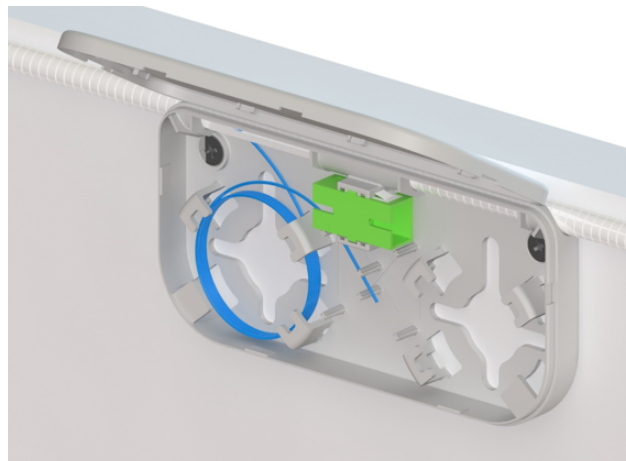
C. Splicing Distribution Cable Fiber to Drop Cable Fiber



◀ Following the direction of the main distribution point, cut the 900 μ m subscriber fiber at the next available point of entry.

e.g. for Apartment 101, cut the fiber at the window cut inside Apartment 102's Fiber Entry Box.

▶ Pull back the fiber and cut to length. It is recommended to leave at least 1 meter (~3 feet) of fiber.



◀ Present the Miniflex cable into the adjacent storage area and strip away approx. 1 meter of the outer jacket using a rotary cutter.

Secure the Miniflex with a cable tie and secure the aramid to the appropriate feature in the entry box before trimming to length.

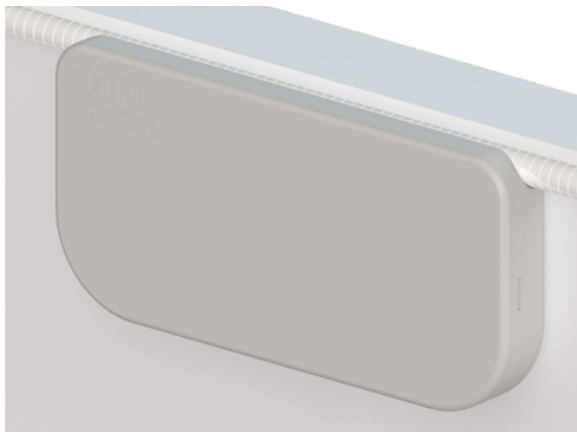
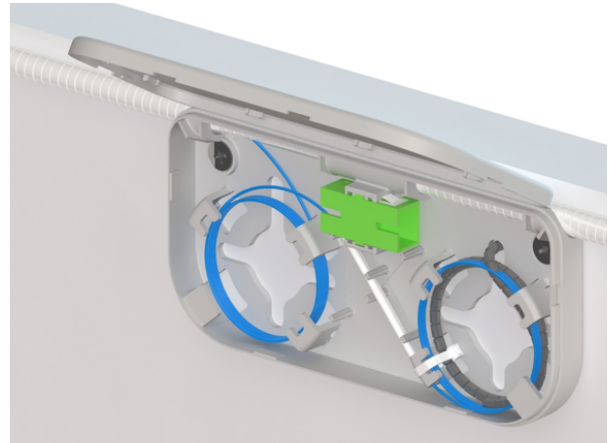
PPC QuikPass™ Installation Instructions



C. Splicing Distribution Cable Fiber to Drop Cable Fiber (cont)

- ▶ Splice the 900µm distribution fiber to the Miniflex Drop Cable fiber and protect the splice with the supplied heat shrink.

Coil the excess fiber in the appropriate left/right side storage area and adjust the coil diameters as necessary so that the splice protector can be located in the holder. Take care with the location to ensure that the fiber minimum bend radius (>7.5mm) is respected.



- ◀ Fit the cover to the Fiber Entry Box.

D. Pushing Fiber to the Customer Terminal

- ▶ Lay a route of Miniflex Protection Tubing from the hallway entry box to the customer terminal (<10 meters). Secure the Miniflex at the entry box and customer terminal with cable ties, as well as along the route using suitable cable clips. Avoid tight bends and any other features that would hinder pushing the fiber through the Miniflex Protection Tubing.

Following the direction of the main distribution point, cut the subscriber fiber at the next available point of entry that provides sufficient fiber to be pushed to the customer terminal.

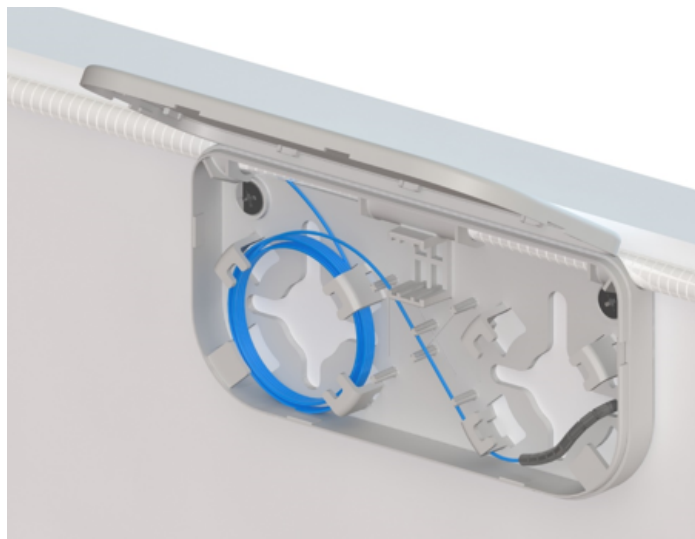
e.g. for a 5 meter route, allow at least 7 meters of distribution fiber.



PPC QuikPass™ Installation Instructions



D. Pushing Fiber to the Customer Terminal (cont)

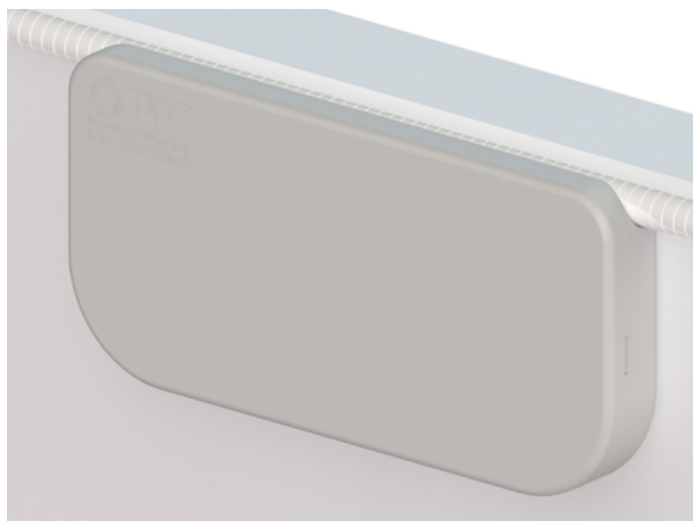


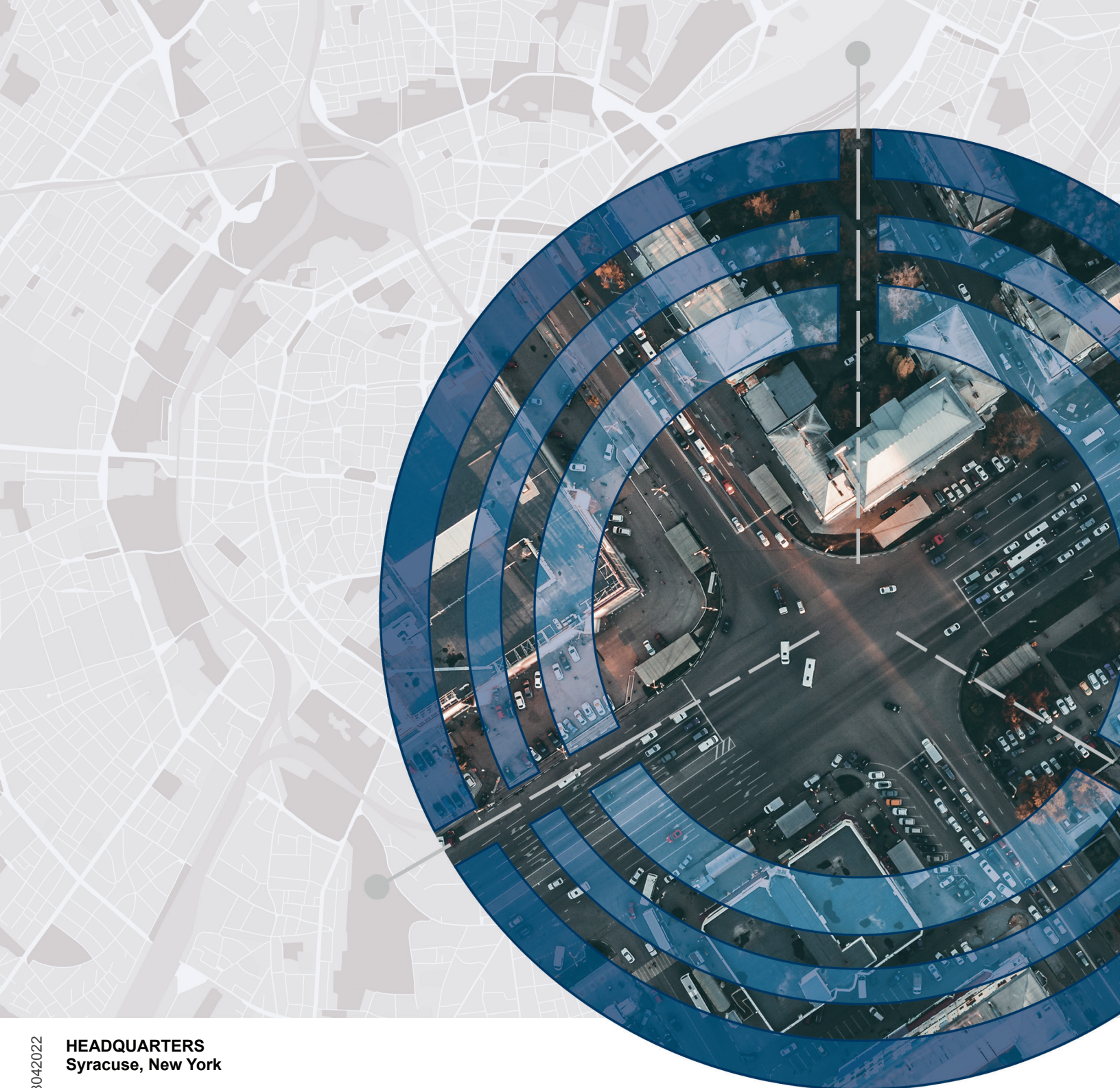
◀ Pull back the fiber and push it into the Miniflex Protection Tube.

Note: If the fiber meets resistance during the pushing installation, it is recommended to unclip the Miniflex Protection Tube from the wall and lay it in a straight line.

When the fiber has been pushed all the way to the customer terminal, ensure that sufficient slack is left at both the Fiber Entry Box and the customer terminal.

▶ Fit the cover to the Fiber Entry Box.





rev2_08042022

HEADQUARTERS
Syracuse, New York

6176 East Molloy Road
East Syracuse, New York 13057

TEL: 315-431-7200 | FAX: 315-431-7201



ppc-online.com