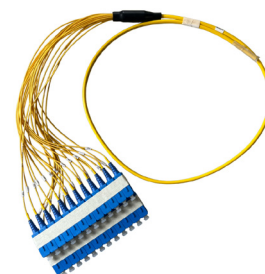


4-24F Single Mode Breakout Cables & Pigtails



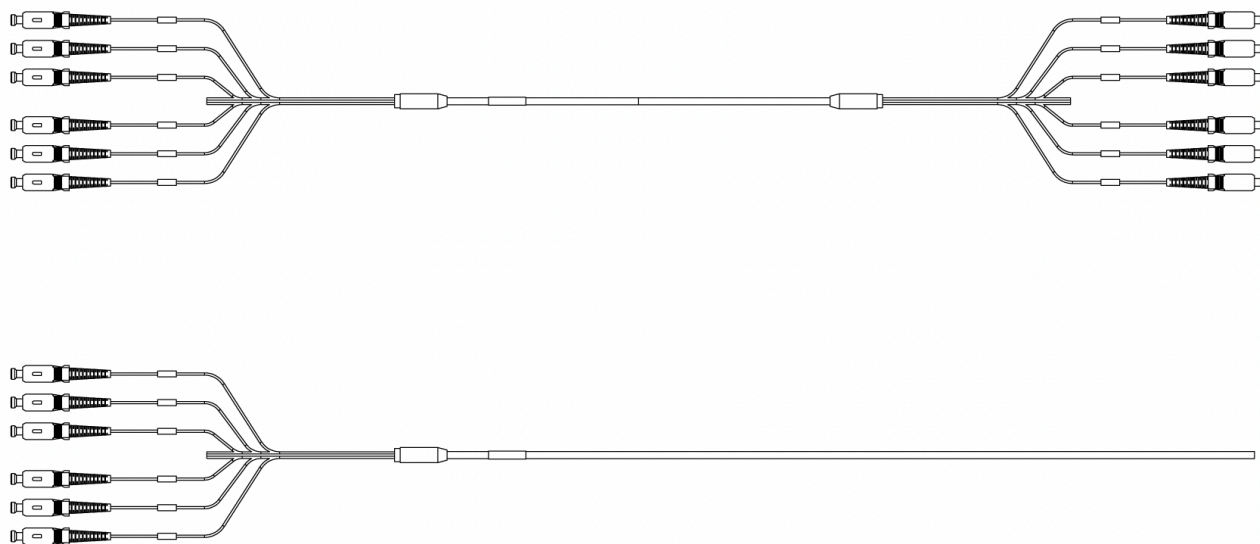
Features & Benefits

- Available in 4, 6, 8, 12 and 24 fiber counts
- Breakout lengths between 6 - 24" in standard 3" increments
- Breakout furcation diameters of 1.2, 1.6 and 2mm
- Available in SC simplex/duplex and LC simplex/duplex connector configurations
- Available in APC or UPC polish
- Factory terminated and 100% tested
- Configurable design to best fit any application
- Telcordia GR-326, GR-2866 and RoHS 2002/95/EG compliant



Overview

The PPC breakout fiber cable assemblies and pigtails deliver the performance and reliability needed in today's demanding high-speed broadband and data networks. These cables have many variations to choose from to fit your precise application.



Technical Data

Specification	Value
Operating Wavelength	1310/1550nm
Fiber Type	G657.A2
Jacket Color	Yellow
Jacket Material	OFNR
Length Tolerance	+2% of total cable length
Operating & Storage Temperature	-40 °C to 70 °C (-40 °F to 158 °F)

4-24F Single Mode Breakout Cables & Pigtails



Technical Data (cont.)

Connector Type	Parameter	Specifications
SC/UPC	MAX Insertion Loss	0.25 db
	TYP Insertion Loss	0.10 db
	TYP Return Loss	60 db
	MIN Return Loss	50 db
SC/APC	MAX Insertion Loss	0.35 db
	TYP Insertion Loss	0.15 db
	TYP Return Loss	70 db
	MIN Return Loss	60 db
LC/UPC	MAX Insertion Loss	0.25 db
	TYP Insertion Loss	0.10 db
	TYP Return Loss	60 db
	MIN Return Loss	50 db
LC/APC	MAX Insertion Loss	0.35 db
	TYP Insertion Loss	0.15 db
	TYP Return Loss	70 db
	MIN Return Loss	60 db

4-24F Single Mode Breakout Cables & Pigtails



Ordering Information

Example Part Number:	S	J	24	3	7	U	1	4	A	U	Y	100	F
Character Number:	1	2	3	4	5	6	7	8	9	10	11	12	13

1 CABLE TYPE
S - SINGLEMODE

2 ASSEMBLY TYPE
J - CABLE ASSEMBLY
P - PIGTAIL

3 FIBER COUNT
04 - 4 FIBER
06 - 6 FIBER
08 - 8 FIBER
12 - 12 FIBER
24 - 24 FIBER

4 1ST END BREAKOUT LENGTH
0 - BLUNT
1 - 6 INCHES
2 - 9 INCHES
3 - 12 INCHES
4 - 15 INCHES
5 - 18 INCHES
6 - 21 INCHES
7 - 24 INCHES

5 1ST END CONNECTOR TYPE
0 - NO CONNECTORS
4 - SC SIMPLEX
5 - SC DUPLEX
7 - LC SIMPLEX
8 - LC DUPLEX

6 1ST END POLISH TYPE
0 - NO CONNECTORS
A - APC
U - UPC

7 2ND END BREAKOUT LENGTH
1 - 6 INCHES
2 - 9 INCHES
3 - 12 INCHES
4 - 15 INCHES
5 - 18 INCHES
6 - 21 INCHES
7 - 24 INCHES

8 2ND END CONNECTOR TYPE
4 - SC SIMPLEX
5 - SC DUPLEX
7 - LC SIMPLEX
8 - LC DUPLEX

9 2ND END POLISH TYPE
A - APC
U - UPC

10 BREAKOUT CABLE DIAMETER
U - 1.2MM
H - 1.6MM
2 - 2MM

11 CABLE JACKET COLOR
Y - YELLOW

12 ASSEMBLY OVERALL LENGTH
XXX - LENGTH

13 UNIT OF MEASUREMENT
F - FEET
M - METERS

r1_01122024