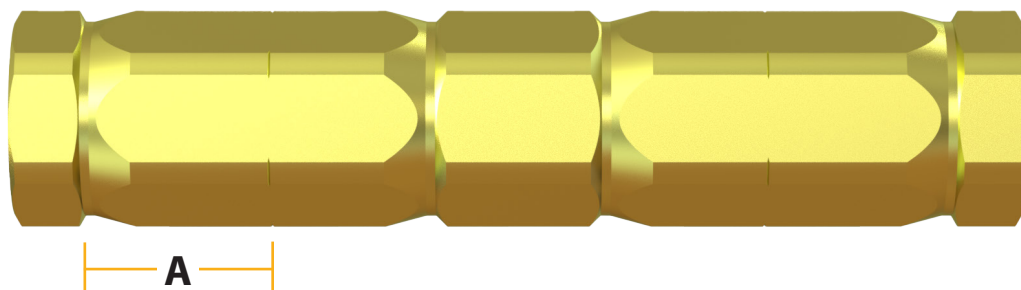


# Hardline

## NexBand™ Splice Connector



### Features & Benefits

- Designed for DOCSIS 4.0+ applications
- Fully rated to 3GHz with improved RF performance to 1.2GHz and 1.8GHz
- Includes all current features of PPC 3-Piece connectors

### Mechanical Specifications

Connector	Hex Size	CC Trim Length (A)	Cable Retention
	<i>(inches)</i>	<i>(inches)</i>	<i>(lbs)</i>
NXBS500P3	15/16	1	500
NXBS540QR	1 1/16	1	500
NXBS565P3/TX	1 1/16	1	575
NXBS625P3	1 1/16	1	600
NXBS700P3/TX	1 3/16	1	650
NXBS715QR	1 3/16	1	650
NXBS750P3	1 3/16	1	700
NXBS840P3/TX	1 5/16	1	750
NXBS860QR	1 7/16	1 1/16	795
NXBS875P3	1 5/16	1	800

### Cable Dimensions

Cable Series	Nominal Center Conductor Diameter	Nominal Sheath I.D.	Nominal Sheath O.D.	Diameter Over Jacket
	<i>(inches)</i>	<i>(inches)</i>	<i>(inches)</i>	<i>(inches)</i>
500P3	0.109	0.452	0.500	0.570
540QR	0.124	0.513	0.540	0.610
565P3/TX	0.129	0.519	0.565	0.635
625P3	0.136	0.563	0.625	0.695
700P3/TX	0.163	0.653	0.703	0.775
715QR	0.166	0.686	0.715	0.785
750P3	0.166	0.678	0.750	0.830
840P3/TX	0.194	0.780	0.840	0.920
860QR	0.203	0.828	0.860	0.960
875P3	0.194	0.797	0.875	0.955

### Electrical Specifications

Bandwidth	0 MHz to 3 GHz
Impedance	75 Ohms (nominal)
Return Loss	-25 dB to 3 GHz
Insertion Loss	-0.25 dB to 3 GHz
Operating Voltage	90 V (at 60 Hz continuous AC)
Operating Current Rating	20 Amps (at 60 Hz continuous AC)
Operating Temperature	-40°F to + 140°F (-40°C to 60°C)

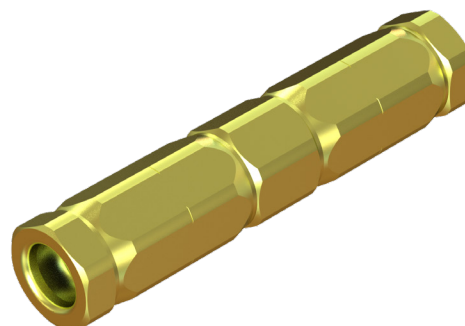
*Meets or Exceeds all SCTE Specifications*

### Preparation & Installation Tools

Two (2) adjustable wrenches

Linemen's pliers or other appropriate cutters

Appropriate cable preparation tools



Please contact your PPC Sales representative about future availability

These products may be protected by one or more patents • For further information, please visit: [www.ppc-online.com/patents](http://www.ppc-online.com/patents)

6176 E. Molloy Rd. East Syracuse, NY 13057 U.S.A. • [customerservice@ppc-online.com](mailto:customerservice@ppc-online.com) • 1-800-800-6652 • +1 315-431-7200 • [www.ppc-online.com](http://www.ppc-online.com)