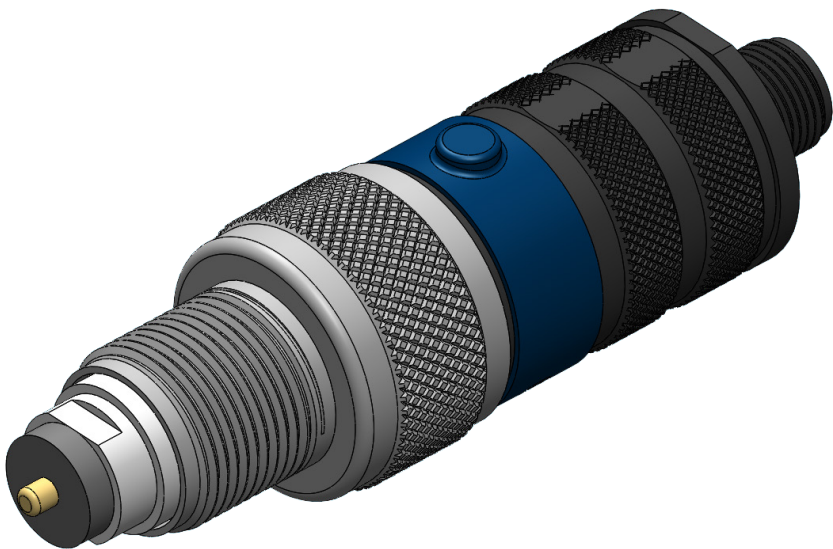


TPIF-20 Test Probe



Overview

Power blocking test probe with ingress finder



Technical Data

Electrical Specifications

Specification	Value
Frequency Range	5-1218 MHz
Insertion Loss (tap input to probe output)	-20 +/- 2 dB to 5-1218 MHz
Tap Insertion Loss with Probe Inserted	5-54 MHz - <2.5 dB; 55-1218MHz <3.5 dB
Tap Insertion Loss with Probe Inserted and Button Depressed	5-30 MHz: 6.5-8.0 dB; 55-1218 MHz: <3.5 dB
Max Operating Voltage	100VAC
Surge Rating	Product not to be left installed for an extended period of time and is not designed for unusual voltage events

**Can vary based on tap configuration and manufacturer*

r4_10022024