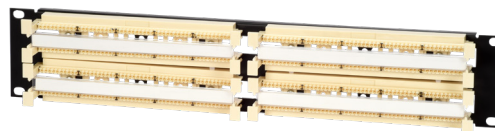


# Cross Connect CAT3/5e 110 Type Blocks



## Features & Benefits

- Designed for areas of limited space
- Available with fixing legs
- Label strips for easy identification
- Cables can be routed from the left or right
- Available in wall mount versions of 50 and 100 pairs
- Rack mount version for 100 or 200 pairs
- Wall mount and 19" cable managers
- Available in Cat3 and Cat5e



## Overview

PPC's category 3 and 5e 110 type blocks are designed to support voice and high-speed data applications. The 110 series wiring block conforms to ANSI/TIA-568.2-D, ISO/IEC 11801-1:2017, ISO/IEC 11801-2:2017 and CENELEC - EN 50173-1:2018 for Category 3/5e Class C/D applications.

The cross connect system is available in 19" rack mounted and wall mounted versions. For wall mount applications, the 110 cross connect with legs can be fixed directly on the wall or onto backboards. All 19" 110 rack solutions are, by default, without legs. The 110 block without legs can be also used for the basic and extension cross connect racks. The 110 cross-connect system can be used in building entrance facilities, telecommunications closets or equipment rooms to provide fixed cross connections for voice and data applications.

The wall mount cross connect system is available in 50- and 100-pair versions, and the 19" cross connect is available in 100- and 200-pair versions. The 5-pair connecting block must be used for category 3 backbone cabling terminations and the 4-pair for horizontal category 5e cabling.

## Applications

- Building entry facilities
- Telecoms closets
- Equipment rooms
- Wall-mounted or rack-mounted
- Voice and data communications

## Standards

- ANSI/TIA-568.2-D
- ISO/IEC 11801-1:2017, ISO/IEC 11801-2:2017
- CENELEC - EN 50173-1:2018
- UL94V-0

## Technical Data

### Mechanical Data

Specification	Value
Dimensions (W x D x H)	See technical drawing
Material Wiring Block	19" frame - 1.5mm steel powder coated Wiring base - PC UL94V-0
Material Connecting Block	PC UL94V-0 Phosphor bronze plated with 100 micro-inch SN, plated with 100% Tin

# Cross Connect CAT3/5e 110 Type Blocks



## Technical Data

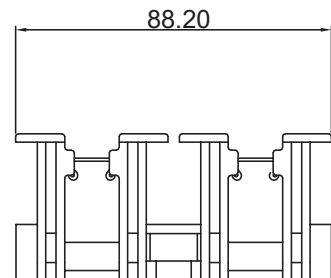
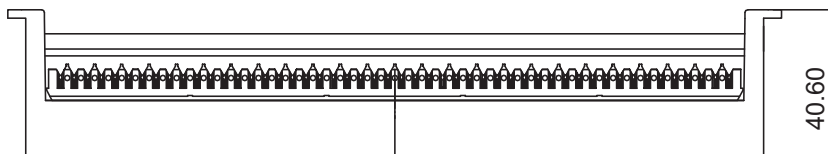
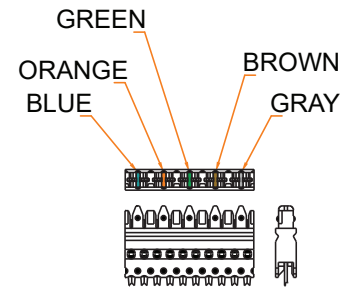
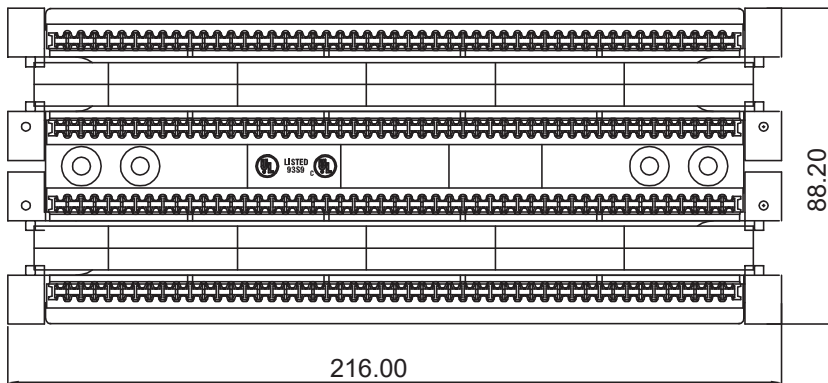
### Electrical Characteristics

Specification	Value
Insulation Resistance	10 Mega Ohms min
Dielectric Withstanding Voltage	1000 volts, RMS, 60HZ, 1 min
Contact Resistance	20 milliohms min
Current Rating	1.5 Amps at 20°C

### Environmental Conditions

Specification	Value
Storage	-40 °C to 70 °C (-40 °F to 158 °F)
Operation	-10 °C to 60 °C (14 °F to 140 °F)
Relative Humidity (Operational)	Maximum non-condensing 93%

## Technical Drawing



# Cross Connect CAT3/5e 110 Type Blocks



## Ordering Information

Part Number	Description
<b>110 Wiring Block Series Without Legs</b>	
SCSWWB50P	50 Pair 110 Wiring Block Without Legs
SCSWWB100P	100 Pair 110 Wiring Block Without Legs
SCSCM110NL	110 Cable Manager Without Legs
<b>110 Wiring Block Series With Legs</b>	
SCSWWB50PL	50 Pair 110 Wiring Block With Legs
SCSWWB100PL	100 Pair 110 Wiring Block With Legs
SCSCM110L	110 Cable Manager With Legs
<b>110 19" Rack Mount Wiring Block Series</b>	
SCSRWB100P	100 Pair 110 Type, 19" Rack Mount Wiring Block
SCSRWB200P	200 Pair 110 Type, 19" Rack Mount Wiring Block
SCSCM110R	19" 1U 110 Cable Manager
<b>110 Connecting Block</b>	
SCSWBCC35P	110 Type 5-Pair Connecting Block, Category 3
SCSWBCC5e4P	110 Type 4-Pair Connecting Block, Category 5e

