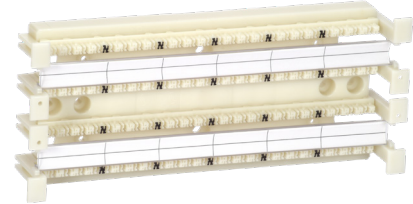


Cross Connect CAT6 110 Type Blocks



Features & Benefits

- Designed for areas of limited space
- Available with fixing legs
- Label strips for easy identification
- Cables can be routed from the left or right
- Available in wall mount versions of 48 and 96 pairs with legs
- Rack mount version for 96 or 192 pairs
- 19" 110 series integrated with cable managers



Overview

PPC's category 6 110-type cross connect blocks are designed to support voice and high-speed data applications. The 110-series wiring block conforms to ANSI/TIA-568.2-D, ISO/IEC 11801-1:2017, ISO/IEC 11801-2:2017 and CENELEC - EN 50173-1:2018 for Category 6 Class E applications.

The cross connect system is available in 19" rack mounted and wall mounted versions. For wall mount applications, the 110 cross connect with legs can be fixed directly on the wall or onto backboards. All 19" 110 rack solutions are, by default, without legs. The 110 block without legs can be also used for the basic and extension cross connect racks.

The 110 cross connect system can be used in building entrance facilities, telecommunications closets and equipment rooms to provide fixed cross connections for voice and data applications.

The wall mount cross connect system is available in 48- and 96-pair versions, and the 19" cross connect is available in 96- and 192-pair versions. The 4-pair connecting block must be used for category 6 horizontal cabling terminations.

Applications

- Consolidation points for voice and data
- Supports high speed data applications when used with Category 6 cables
- Wall-mounted or rack-mounted

Standards

- ANSI/TIA-568.2-D
- ISO/IEC 11801-1:2017, ISO/IEC 11801-2:2017
- CENELEC - EN 50173-1:2018
- UL94V-0

Technical Data

Mechanical Data

Specification	Value
Dimensions (W x D x H)	See technical drawing
Material Wiring Block	19" frame - 1.5mm steel powder coated Wiring base - PC UL94V-0
Material Connecting Block	PC UL94V-0 Phosphor bronze plated with 100 micro-inch SN, plated with 100% Tin

Cross Connect CAT6 110 Type Blocks



Technical Data

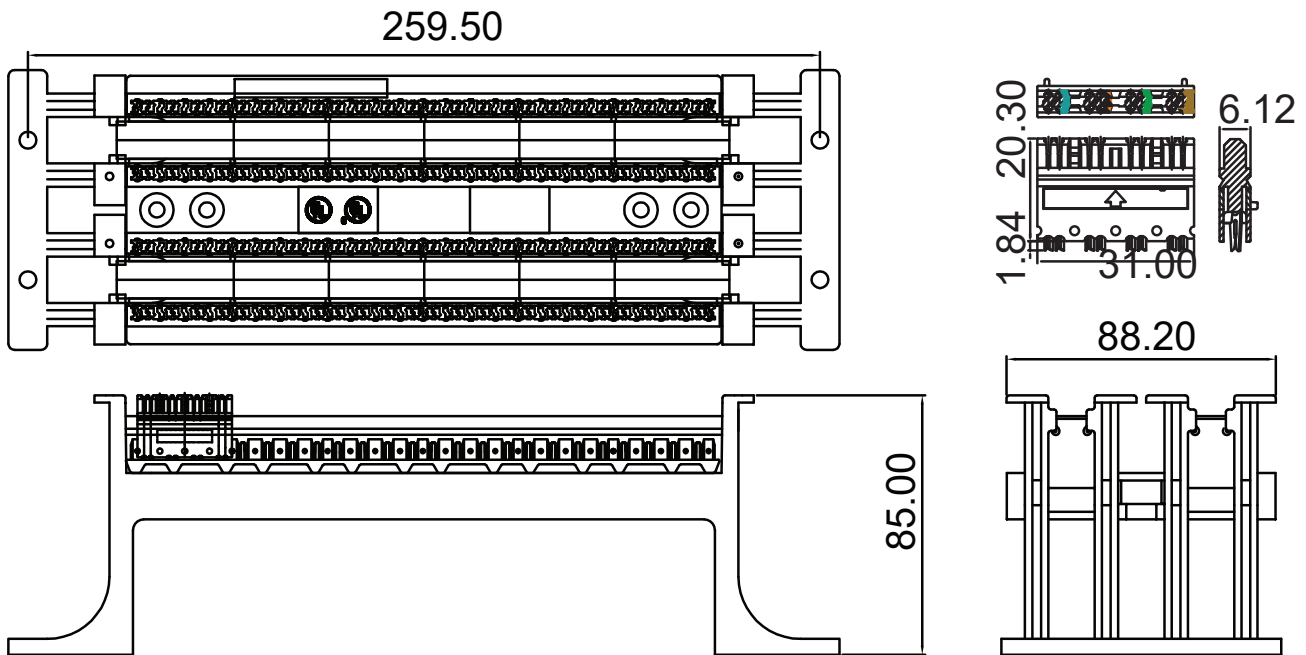
Electrical Characteristics

Specification	Value
Insulation Resistance	10 MegaOhms min
Dielectric Withstanding Voltage	1000 volts, RMS, 60HZ, 1 min
Contact resistance	20 milliohms min
Current Rating	1.5 Amps at 20°C

Environmental Conditions

Specification	Value
Storage	-40 °C to 70 °C (-40 °F to 158 °F)
Operation	-10 °C to 60 °C (14 °F to 140 °F)
Relative Humidity (Operational)	Maximum non-condensing 93%

Technical Drawing

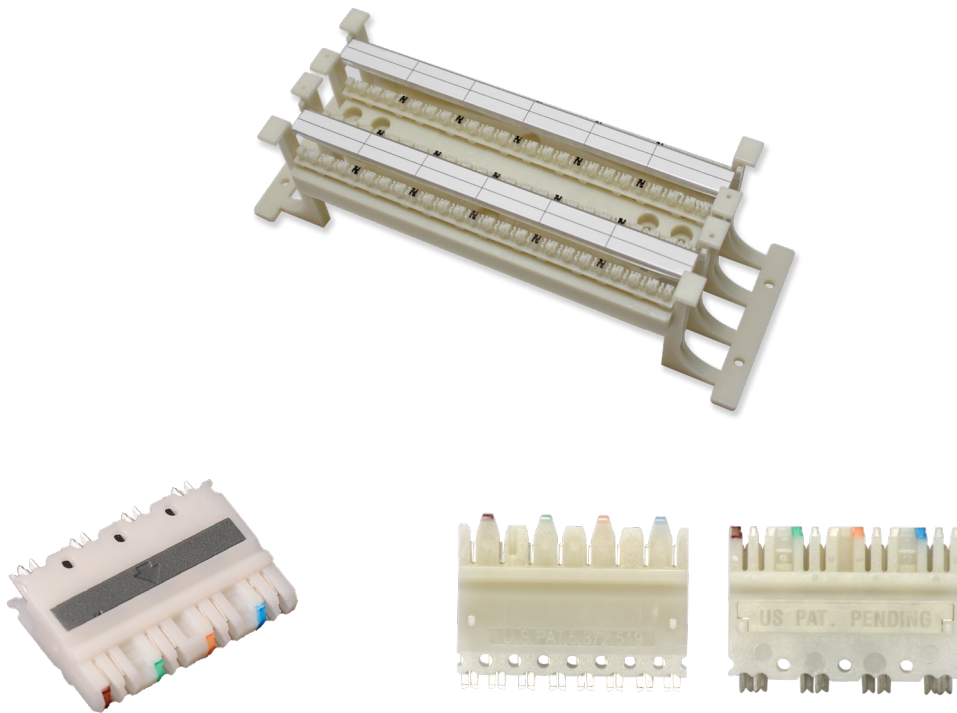


Cross Connect CAT6 110 Type Blocks



Ordering Information

Part Number	Description
110 Wiring Block Series Without Legs	
SCSWWBC648P	48 Pair, Category 6, 110 Wiring Block Without Legs
SCSWWBC696P	96 Pair, Category 6, 110 Wiring Block Without Legs
110 Wiring Block Series With Legs	
SCSWWBC648PL	48 Pair, Category 6, 110 Wiring Block With Legs
SCSWWBC696PL	96 Pair, Category 6, 110 Wiring Block With Legs
SCSCM110L	110 Cable Manager With Legs
110 19" Rack Mount Wiring Block Series	
SCSRWBC696P2U	96 Pair, Category 6, 110 Type, 19" Rack Mount Wiring Block
SCSRWBC6192P3U	192 Pair, Category 6, 110 Type, 19" Rack Mount Wiring Block
110 Connecting Block	
SCSWBCC64P	110 Type 4-Pair Connecting Block, Category 6



rev1_01192023

These products may be protected by one or more patents • For further information, please visit: www.ppc-online.com/patents

customerservice@ppc-online.com • 1-800-800-6652 • www.ppc-online.com