

Cross Connect 110 Wall Mount Frame



Features & Benefits

- 300 pair capacity per unit
- Up to 3 x units can be combined for up to 900 pairs
- Label strips and identification
- Robust steel construction
- Integrated cable managers



Overview

PPC's cross connect 110 wall mount frame is suitable for mounting a 100-pair 110 wiring block without legs onto the cross connect rack. The cross connect rack can be directly mounted onto the wall, enabling the system to grow as per the number of pairs to be terminated.

The 110 cross connect rack provides high density and additional cable access within a compact space. You can mount it to walls or backboards in building entrance facilities, telecommunications closets or equipment rooms.

The system can be scaled up by placing a basic cross connect rack at the bottom and placing two extension cross connect racks above. In this manner, the wall mount cross connect system can grow from a basic of 300 pairs per rack to thousands of pairs by mounting multiple cross connect systems in a side-by-side configuration.

Each basic and extension cross connect rack supports three 100-pair 110 wiring blocks without legs and three 110 block cable managers without legs. Under every 100-pair 110 wiring cross connect block, a 110 cable manager must be placed.

Applications

- Building entry facilities
- Telecoms closets
- Equipment rooms
- Wall-mounted or rack-mounted
- Voice and data communications

Standards

- ANSI/TIA-568.2-D
- ISO/IEC 11801-1:2017, ISO/IEC 11801-2:2017
- CENELEC - EN 50173-1:2018

Technical Data

Mechanical Data

Specification	Value
Material	Mounting frames and vertical cord managers are made of 1.2 steel
110 Basic mounting frame with bottom cable holder	547.5mm (H) x 215.9mm (W) x 231.9mm (D)
110 Extension Mounting Frame	416mm (H) x 215.9mm (W) x 88.9mm (D)
110 Basic Cable Management Rack with bottom cable holder	546.35mm (H) x 215.9mm (W) x 231.9mm (D)
110 Extension Cable Management Rack	417.6mm (H) x 215.9mm (W) x 228.6mm (D)

Cross Connect 110 Wall Mount Frame

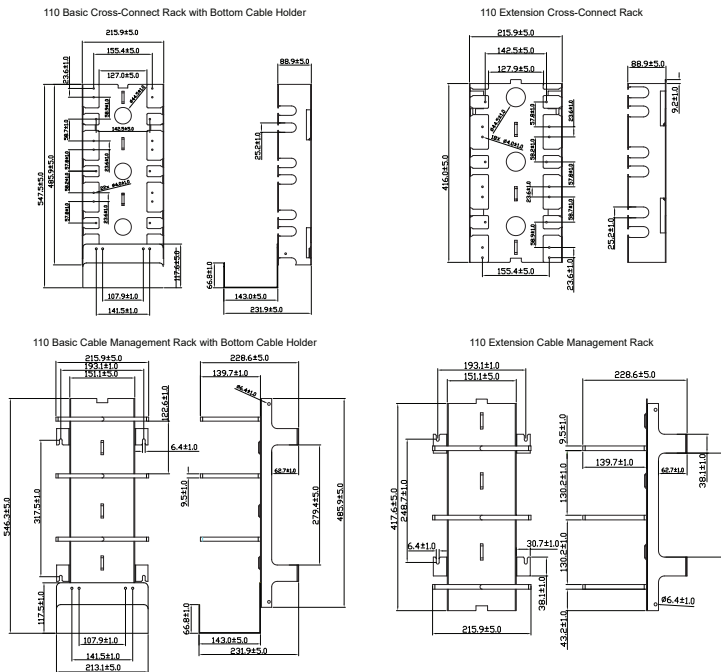


Technical Data

Environmental Conditions

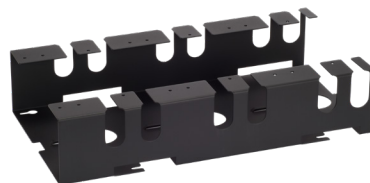
Specification	Value
Storage	-40 °C to 70 °C (-40 °F to 158 °F)
Operation	-10 °C to 60 °C (14 °F to 140 °F)
Relative Humidity (Operational)	Maximum non-condensing 93%

Technical Drawing



Ordering Information

Part Number	Description
SCSWWR300PH	110 Basic Cross Connect Rack with Bottom Cable Holder
SCSWWR300PNH	110 Extension Cross Connect Rack
SCSWCRH	110 Basic Cable Management Rack with Bottom Cable Holder
SCSWCRNH	110 Extension Cable Management Rack



rev1_01192023

These products may be protected by one or more patents • For further information, please visit: www.ppc-online.com/patents

customerservice@ppc-online.com • 1-800-800-6652 • www.ppc-online.com