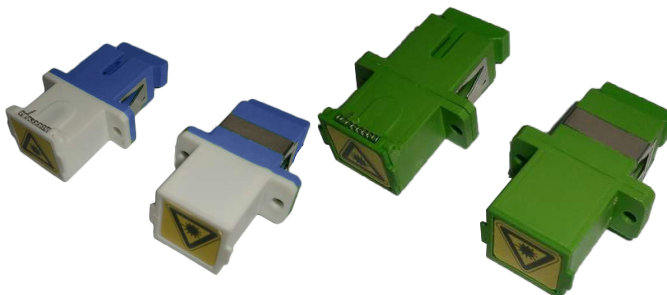


Fiber Shuttered Adapters



Features and Benefits

- High performance
- Standard rear side blue or green color
- SC Simplex and LC Duplex versions
- White shutter side to suit the color of the faceplate
- Low insertion loss
- High mating durability



Overview

PPC shuttered adapters are designed to meet the high safety requirements of FTTH networks, and prevent ingress of dust and accidental laser exposure. The spring-loaded shutters will remain closed when the connector is unplugged to prevent exposure to the laser. All adapters are manufactured in standard colors for identifying UPC and APC connectors. PPC fiber optic adapters are manufactured strictly according to the international standards and are fully compatible with all types of equipment. The shuttered adapters have the same high quality optical performance as standard non-shuttered adapters.

Application

- FTTH deployments
- Testing and test equipment
- All types of connection interface
- CATV, WAN, LAN and Telecom networks
- Part of all types of fiber management products

Technical Specification

Optical Data

Parameters	Values
Insertion loss	$\leq 0.2\text{dB}$ (connector dependant)
Return loss	$\geq 50\text{dB}$ UPC, $\geq 60\text{dB}$ APC (connector dependant)
Mating durability	$\leq 0.2\text{dB}$ after 1000 cycles

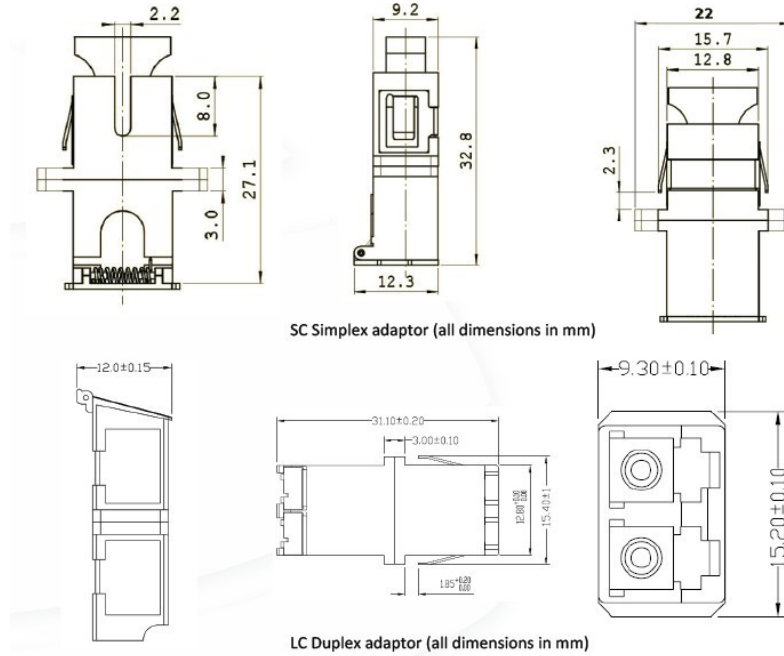
Environmental Data

Parameters	Values
Operating temperature	-20 °C to 70 °C (-4 °F to 158 °F)
2011/65/EC RoHS	Fully compliant

Fiber Shuttered Adapters



Technical Drawing



Ordering Information

SAD

4 5 6 7 8-9 10 11

04. Adapter type
1 = SC Simplex
2 = LC Duplex

05. Connector Finish
P = PC
U = UPC
A = APC

06. Sleeve Type
C = Zirconia

07. Housing color
A = Aqua
G = Green
U = Blue
H = Heather Violet
I = Beige

08-09. Shutter Color
BL = Blue
GN = Green
BG = Beige
WH = White

10. Flange Type
F = With Flange
N = Without Flange

11. Shutter Type
S = One shutter (SC)
E = Two Individual (LC)

r1_01032024