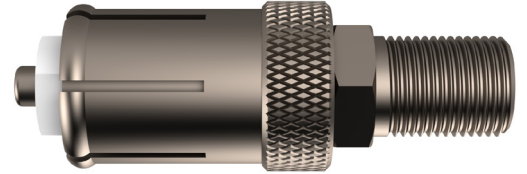


KSMPPFPO Test Adapter



Features & Benefits

- All brass construction
- F female per ANSI SCTE 01
- KS male to interface with 5/8" entry ports



Overview

The KSMPPFPO test adapter is designed for technicians working on Taps, Line Extenders, Directional Couplers, Splitters, or any other component that uses 5/8" entry ports. The KSMPPFPO allows quick and easy measurements directly from the component.

Technical Data

Port Depth Range	Return Loss	Insertion Loss	Bandwidth
1.8 mm - 22.9 mm (.070 in - .900 in)	-25 dB minimum	.5 dB maximum	DC to 3 GHz

Meets or Exceeds all SCTE Specifications

Ordering Information

Part Number	Description
KSMPPFPO	Test adapter, KS male to F female, Push on