

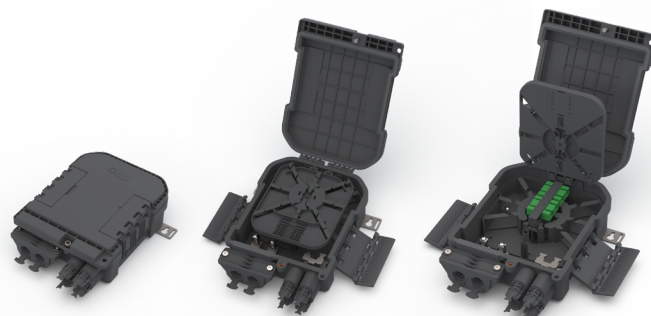
Sapphire™

Micro Drop Terminal (MDT)



Features & Benefits

- Extremely compact IP-68 footprint
- Indoor/Outdoor wall mount or pole mount
- One or two input ports for 3mm, 6mm, 8mm-13mm cable
- Pass-through capability with uncut tubes storage
- Centralized or distributed architectures
- Spliced or pre-terminated drop cables
- SC or LC pigtails and adapters
- Flat or round drop cables



Overview

The Sapphire™ Micro Drop Terminal (MDT) is an indoor/outdoor fiber enclosure, designed especially for last-mile FTTH connections. Smaller than other products with similar functionality and capacity, the MDT supports a wide range of applications for pass-through, direct splicing, pre-terminated, splitting and other custom options.

Designed to exceed IP-67 requirements, the Sapphire MDT provides reliable protection for the fiber connections inside. Its mechanical sealing allows quick and easy servicing and re-entry for adding new subscribers.

Feature rich and modular, the MDT comes with everything that is needed for installation – full set of cable grommets, storage basket for uncut tubes, splice tray for six splices and a mini-PLC splitter, and a bulkhead bracket for two SC Duplex or LC Quad adapters.

Technical Data

Mechanical Data

Dimensions (H x W x D)	Adapter type	Drop cable capacity
176 x 136 x 63 mm (6.93 x 5.35 x 2.4 in)	SC or LC	4 flat drop or round cable

Splice tray	Feeder Cable Port
6 fibers + mini-PLC splitter	Maximum 13mm (0.51 in) with pass-through capability - Dual 8-10mm ports with options for 2-4mm cable - Dual 10-13mm ports with options for 4-6mm cable

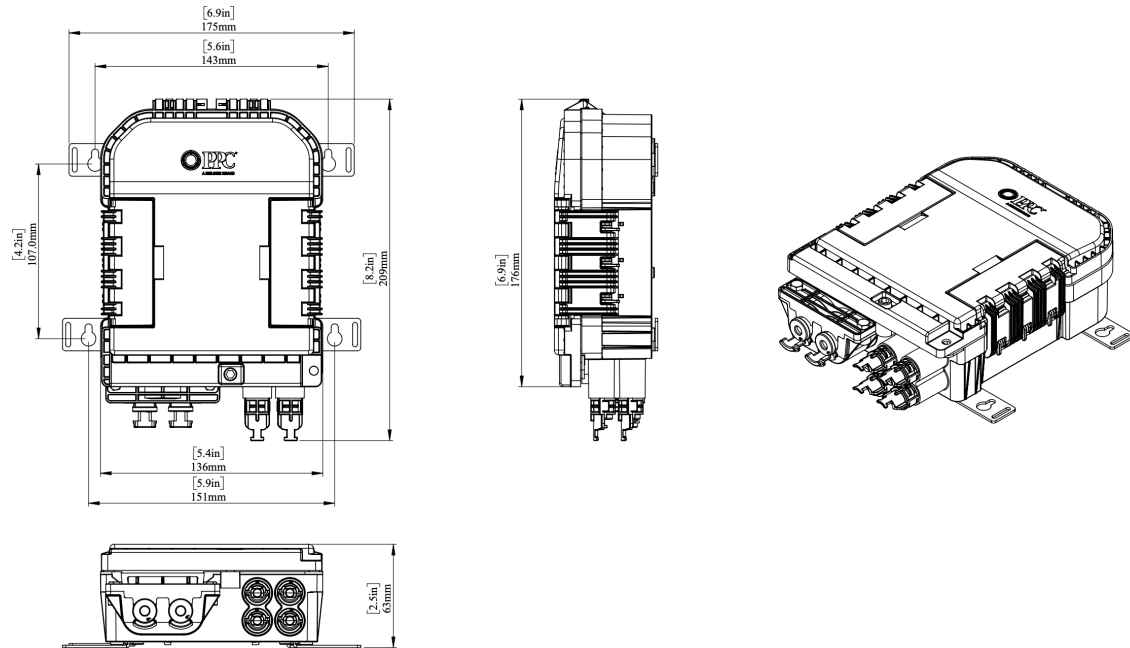
Environmental Data

IP rating	Material	Weight
IP-68	PC+PBT	550 gr (1.2 pounds)

Sapphire™ Micro Drop Terminal (MDT)



Technical Drawing



Ordering Information

Example
(* = Optional)

MDT	0	4	A	2	4	6	4	3	2	A	A
	1	2			3*			4*		5*	6

Input Cable Grommets:

One or two input ports for 3mm, 6mm, 8mm-13mm cable.
Pass-through capability with uncut tubes storage.

1 Drop cable capacity

04 = 4 drop cables

2 Drop cable type

A = Flat drop 8x4.5mm
B = 2-4mm round cable
C = 4-6mm round cable
D = 2x 3mm round cable

3 Adapter type and count

120 = 1xLC Quad blue
220 = 2xLC Quad blue
121 = 1xLC Quad green
221 = 2xLC Quad green
145 = 1xSC Duplex blue
245 = 2xSC Duplex blue
146 = 1xSC Duplex green
246 = 2xSC Duplex green
Omit Section 3 if no adapters

4 Pigtail type and count

211 = 2xLCUPC G657a1
411 = 4xLCUPC G657a1
212 = 2xLCAPC G657a1
412 = 4xLCAPC G657a1
231 = 2xSCUPC G657a1
431 = 4xSCUPC G657a1
232 = 2xSCAPC G657a1
432 = 4xSCAPC G657a1
Omit Section 4 if no pigtails

5 PLC splitter

A = 1x4, bare fiber for splicing
B = 1x2, bare fiber for splicing
G = 1x4 SCU Output
H = 1x4 SCA Output
N = 1x2 SCU Output
P = 1x2 SCA Output
Omit Section 5 if no splitters

6 Logo and configuration

A = PPC logo, heat shrink tray
B = PPC logo, crimp splice tray

Accessory Grommet Kits

Part Number	Description
MDT04-KIT24	Kit of 4 Round Grommets 2-4mm
MDT04-KIT46	Kit of 4 Round Grommets 4-6mm

These products may be protected by one or more patents. For further information, please visit: www.ppc-online.com/patents

6176 E. Molloy Rd. East Syracuse, NY 13057
bbs.cs@belden.com
1-800-800-6652 • +1 315-431-7200



www.ppc-online.com