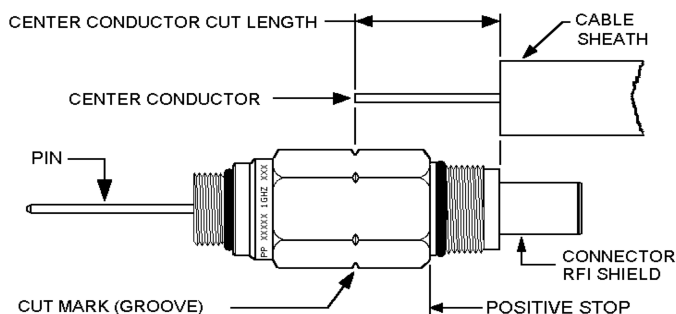


# PS625P3 Install Instructions



## CABLE PREPARATION: MC<sup>2</sup>, P1, P3, T10 & TX

1. Cut end of cable squarely. If cable has outer jacket, remove to expose the sheath for approximately three lengths of the backnut for size of connector used. If the cable has a flooding compound, remove from sheath with appropriate cleaner.
2. Trim the outer sheath and dielectric over the length of dimension "A". See **Figure 1**. PPC pin and splice connectors have a center conductor length CUT MARK on the body. Align the connector and cable as shown in **Figure 2**. This will allow you to prepare the proper center conductor length without guesswork.
3. Using standard coring tools (Cablematic, Cable Prep, Lemco, etc.), remove the dielectric material from inside the sheath over the full length of dimension "B", and any residue that would inhibit the full insertion of the connector's RFI shield.
4. Without scratching the center conductor, remove dielectric material completely over the full length of dimension "A". As a suggestion, a small piece of Plexiglas, with squared edges works well as a safe "scraper".
5. Be sure to remove any cutoff burrs or flares at the end of the Aluminum sheath as indicated at point "Y", and remove any burrs from the center conductor at point "X".

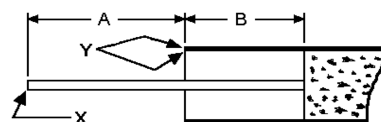


**Figure 2 - Center Conductor Cut Mark**

## CONNECTOR INSTALLATION

1. Loosen seizure screw inside equipment. Cut pin on connector (if necessary) to equipment manufacturer's specifications. Install connector body to equipment port. Hand tighten fully, then 1/8 to 1/4 turn with wrench (20 - 25 ft-lbs).
2. Slide backnut over cable and insert prepared cable fully into connector.
3. Maintain cable position and hand tighten the backnut to the connector body.
4. While holding the connector body with a wrench, tighten the backnut until there is no gap between the front end of the backnut and the positive stop on the connector body. See **Figure 3**.
5. Tighten seizure screw inside equipment port.

## PRODUCT IMAGE:

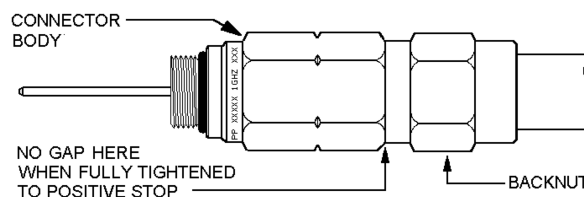


**Figure 1 - Preparation Dimensions**

Cable Size	Connector Type	Dim. "A"	Dim. "B"	Wrench Size
.412	Pin	1 1/8	7/8	7/8
.440	Splice	1 1/8	7/8	7/8
.500	Feed Thru	2 *	7/8	7/8
.565	Pin	1 1/8	7/8	7/8
	Splice	1 1/8	7/8	7/8
	Feed Thru	2 3/8 *	7/8	7/8
.625	Pin	1 1/4	7/8	1
.650	Splice	1 1/4	7/8	1
.700	Pin	1 1/4	7/8	1 1/8
.750	Splice	1 1/4	7/8	1 1/8
.840	Pin	1 1/2	7/8	1 5/16
.875	Splice	1 1/2	7/8	1 5/16
1.000	Pin	1 5/8	1 1/4	1 7/16
	Splice	1 5/8	1 1/4	1 7/16
1.160	Pin	1 1/2	1 1/4	1 1/2
	Splice	1 1/2	1 1/4	1 1/2

### NOTES:

1. All dimensions are in inches.
2. When preparing cable for use with a feed thru connector into either a right angle adaptor, 180 degree adaptor or splice block, dimension "A" should be 1 7/16".
3. \* For Texscan and S/A equipment, add 5/8" to length.



**Figure 3 - Backnut Installation**