

Harmony 4U Pull-Out Swivel Cabinet



Features & Benefits

- Reduced footprint for limited space applications
- 4RU pull-out / swivel rack for front and rear access
- Available fully integrated - Splice & Play
- Indoor and outdoor rated
- Can significantly reduce installation time and costs

Features

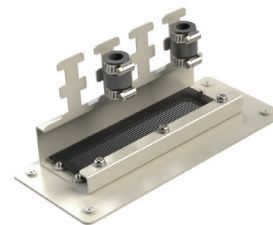
- Wall / pole mount bracket
- 4RU 19" EIA equipment rack
- Fiber splice tray brackets
- Cable management and fiber waterfall
- Lift-off door with padlock hasps
- Sealed outdoor and indoor brush cable entry
- Aluminum construction with powder coat finish

Pull-Out Swivel Rack

- Lockable in place while in parallel position
- Rack pulls outwards by 1" before pivoting
- Pivots to a 37 degree angle in either direction
- Allows for access to front and rear of equipment

Splice & Play Cabinets

- Splice & Play solution increases speed to market
- Saves CAPEX through reduced need for labor
- Simplify the ordering process with all components in a single p/n
- Streamline material management
- Reduce skill level required for installation
- Eliminate risk of failure due to poor end face cleanliness



Indoor Cable Entry



Outdoor Cable Entry

Overview

The Harmony 4U Pull-Out Swivel cabinet includes a side facing equipment 4RU 19" rack that can pivot 37 degrees in either direction, providing full access to the front and rear of equipment in a cabinet that is only 11" deep. The Harmony 4U Pull-Out Swivel cabinet is appropriate for active and passive equipment, both indoors and outdoors.

Optional Equipment

- AC power outlet
- Air conditioner or heat exchanger
- Rack-mount fiber optic passives
- LGX® style snap-in fiber optic passives
- WDM, CWDM, DWDM & MUX/DeMUX devices
- Fiber optic pigtails: 36 - 144 core
- MPO jumpers and patch panels
- Fiber cross connect and distribution patch panels
- Active OBI mitigation equipment

This product may be protected by one or more patents • For further information, please visit: www.ppc-online.com/patents

Harmony 4U Pull-Out Swivel Cabinet



Technical Data

Dimensions

Cabinet (H x W x D)

775 mm x 495 mm x 274 mm (30.5 in x 19.5 in x 10.77 in)

Mechanical Drawing

