

# Indoor Strand Mount

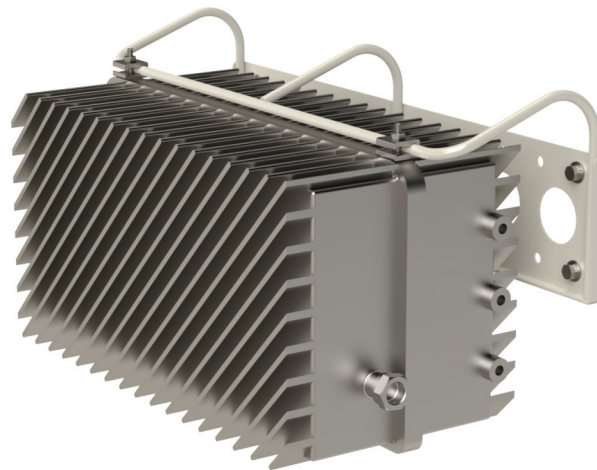


## Features & Benefits

- Strand mount equipment indoors
- Wide compatibility with strand mount nodes
- Open access to sides of equipment
- Optimal clearance from wall
- Obstruction free for heat dissipation

## Features

- Supports up to 60lbs
- Compatible with strand mount points up to 19" apart
- Wall clearance of 6.25" to center
- Wall mount holes on 2" centers - up to 20" apart
- Includes 6 sets SS mounting hardware
- Grounding stud
- Steel construction
- Powder coat paint finish



*Node for reference only, not included*

## Overview

The PPC Indoor Strand Mount Bracket is a quick and simple way to place strand mounted equipment indoors. Able to hold up to 60 lbs of dead load, the PPC Indoor Strand Mount Bracket is widely compatible with many nodes and similar sized strand mount equipment.

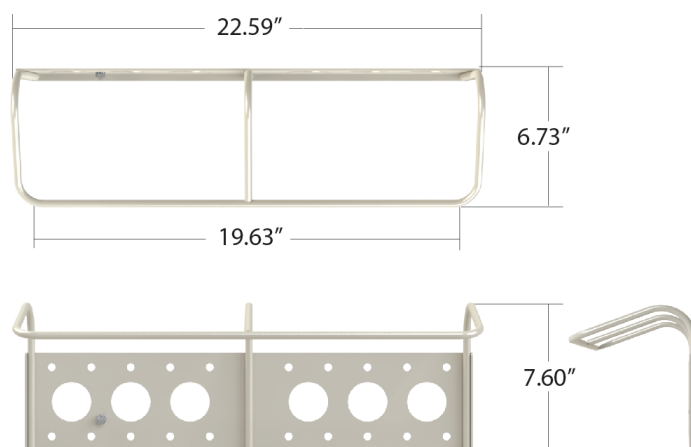
## Technical Data

### Dimensions

H x W x D

193 mm x 574 mm x 171 mm (7.60 in x 22.59 in x 6.73 in)

## Mechanical Drawing



This product may be protected by one or more patents • For further information, please visit: [www.ppc-online.com/patents](http://www.ppc-online.com/patents)

[customerservice@ppc-online.com](mailto:customerservice@ppc-online.com) • 1-800-800-6652 • [www.ppc-online.com](http://www.ppc-online.com)