

# FutureLink® SFU Fiber Network Interface Device (NID)



## Features & Benefits

- One, two or four SC-APC adapters
- Fiber routers for slack storage (up to 30ft of OSP drop + 15ft of 3mm cable)
- Splice chips or splice trays for fusion splicing
- Terminal Binding Post on some models for tracer wire tie-down and testing
- Ground Lug / Strength Member tie-down
- Three cable entry/exit ports with removable flat rubber grommets
- Rear feed-through grommet on some models allows direct wall entry
- Tie downs for cable ties on the lower ports
- Molded-in feet for easy wall mounting
- Push-to-latch, locking hasp and 216 can wrench security bolt on covers
- Slack Storage enclosure can be coupled to bottom for added capacity
- Pole mounting with the Pole Mount Bracket Kit (SFIT- POLEMTG-10)
- Two-port base models are compatible with SFIT-NOZ-2GRMT-10; SFIT-NOZ-DGRMT-10; SFIT-NOZ-GMOLD-1TL nozzles
- Three-port base models are compatible with all SFIT nozzles



SFIT-FK01AJN-002

## Overview

The FutureLink® SFU Fiber NIDs offer flexible and feature-rich solutions for fiber network deployments that fit your budget. These craft-friendly, expandable “grow as you go” designs are ideal for indoor/outdoor service distribution to residential and commercial customers in greenfield and brownfield projects. These SFU Fiber NIDs provide 1-port, 2-port or 4-port solutions with slack storage for excess drop cable. A rear cable port is available on some models to conceal and protect the fiber input or fiber exit. Two or three standard, removable flat rubber grommets protect the lower fiber entry/exit ports. A splice only Fiber NID is also offered for use with active products

## Technical Data

Dimensions (HxWxD)	Materials	Safety	Performance
9 in x 10 in x 3 in	UL 94V-0 (indoor) and UL 94-5VA (outdoor) light gray flame retardant PBT/PC blend	UL1863	Designed to meet GR-049-CORE, GR-2898-CORE & GR-3125-CORE
9 in x 10 in x 5 in			

# FutureLink® SFU Fiber Network Interface Device (NID)



## Product Images



**SFIT-FK01AJN-SPW**



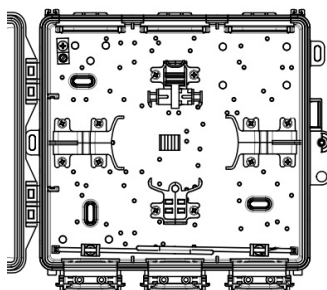
**SFIT-FK01AJN-002 &  
SFIT-FK02AJN-002**



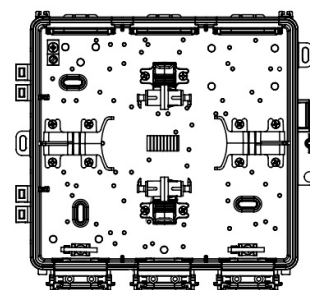
**SFIT-FK01AJN-004**



**SFIT-FK02AJN-004 &  
SFIT-FK04AJN-004**



**SFIT-FK01AJNNNNNN**



**SFIT-FK02AJNNNNNN**

## Ordering Information

PPC Part Number	Description
SFIT-FK01AJN-SPW	1-port SC-APC with integrated splice holder, one 2-port SC frame, lower + rear cable entry/exit ports. Single ground lug, dual ground block and binding post (expandable to 4-port).
SFIT-FK01AJN-002	1-port SC-APC with integrated splice holder, one 2-port SC frame, lower + rear cable entry/exit ports. Single ground lug and binding post (expandable to 4-port).
SFIT-FK02AJN-002	2-port SC-APC with integrated splice holder, one 2-port SC frame, lower + rear cable entry/exit ports. Single ground lug and binding post (expandable to 4-port).
SFIT-FK01AJN-004	1-port SC-APC with integrated splice holder, two 2-port SC frames, lower + rear cable entry/exit ports. Single ground lug and binding post (expandable to 4-port).
SFIT-FK02AJN-004	2-port SC-APC with integrated splice holder, two 2-port SC frames, lower + rear cable entry/exit ports. Single ground lug and binding post (expandable to 4-port).
SFIT-FK04AJN-004	4-port SC-APC with integrated splice holder, two 2-port SC frames, lower + rear cable entry/exit ports. Single ground lug and binding post.
SFIT-FK01AJNNNNNN	1-port SC-APC with splice chips, lower cable entry/exit ports, single tie down ground lug. Compatible with all SFIT Nozzles (expandable to 2-port).
SFIT-FK02AJNNNNNN	2-port SC-APC with splice chips, lower cable entry/exit ports, single tie down ground lug. Compatible with all SFIT Nozzles.

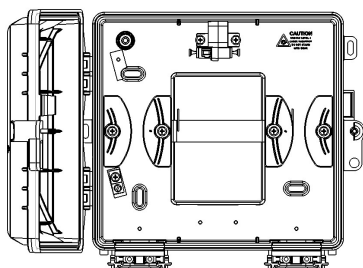
These products may be protected by one or more patents • For further information, please visit: [www.ppc-online.com/patents](http://www.ppc-online.com/patents)

[customerservice@ppc-online.com](mailto:customerservice@ppc-online.com) • 1-800-800-6652 • [www.ppc-online.com](http://www.ppc-online.com)

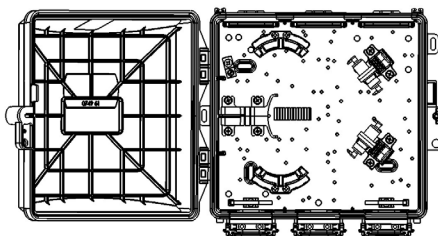
# FutureLink® SFU Fiber Network Interface Device (NID)



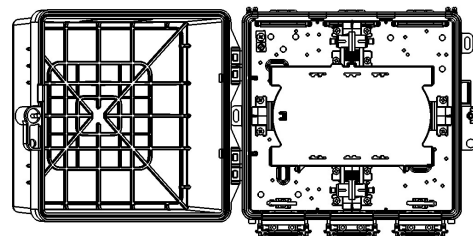
## Product Images



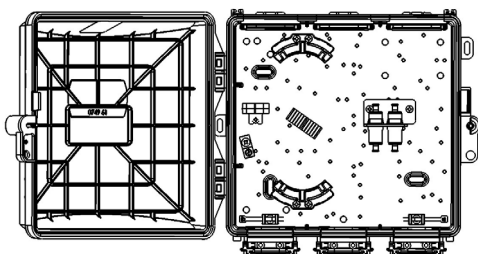
SFIT-FK01ACN-002



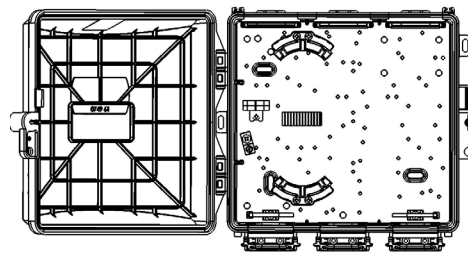
SFIT-FK02ACNNNNNNN



SFIT-FL02AAN-001



SFIT-FK04AJN-002



SFIT-FK00XSNNNNNNN

## Ordering Information

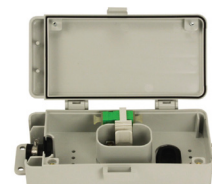
PPC Part Number	Description
SFIT-FK01ACN-002	1-port SC-APC with removable splice case, one 2-port SC frame, lower + rear cable entry/exit ports, single ground lug and binding post (expandable to 2-port).
SFIT-FK02ACNNNNNNN	2-port SC-APC with splice chips, lower cable entry/exit ports, single tie down ground lug. Compatible with all SFIT Nozzles.
SFIT-FL02AAN-001	2-port SC-APC with splice tray, lower cable entry/exit ports, single tie down ground lug (9H x 10W x 5D inches). Compatible with all SFIT Nozzles.
SFIT-FK04AJN-002	4-port SC-APC with splice chips, lower cable entry/exit ports, single tie down ground lug. Compatible with all SFIT Nozzles.
SFIT-FK00XSNNNNNNN	Splice only NID with splice chips, lower cable entry/exit ports, single tie down ground lug and space for mounting active products. Compatible with all SFIT Nozzles.

# FutureLink® SFU Fiber Network Interface Device (NID)



## Features & Benefits

- Low profile and small footprint offer a low-impact appearance on the SFU dwelling
- Compact size, intuitive cable routing and easy assembly make for a quick, single-person installation
- Outdoor or indoor applications
- Weather tight to wind-driven rain, designed to meet GR standards
- Single SC/APC adapter for quick connection
- Internal radius-limiting controls ensure cable bend requirements are met
- Lay-in grommet and exterior cable tie accept flat drop cable
- Internal strength member tie-down holds feed cable securely
- U-channels can be stacked to protect longer feed cable runs



DTS-01AC



SUC-02-24-C

## Overview

The PPC Drop Terminal System is a compact enclosure designed to protect the transition from the outside plant cable to indoor-rated drop in SFU applications. The terminal's design offers a sleek and unobtrusive profile on the exterior of single-family homes. The U-channel protects the incoming cable from the environment as well as dresses up the appearance.

The Drop Terminal includes a single SC/APC adapter for quick connection of the outdoor and indoor fibers. The inbound cable is easily installed, with a lay-in grommet and clamp at the entrance and a strength member tie-point inside. A grommet on the rear of the terminal protects the indoor drop fiber as it enters the dwelling.

The U-channel base fastens to the side of the dwelling, the cover snaps in place and is secured with a captive screw (216 tool compatible). The U-channel and Drop Terminal couple together to provide complete protection for the incoming cable. Additional sections of U-Channel can be used for longer feed cable runs.

## Technical Data

Dimensions (HxWxD)	Materials	Safety	Performance	Finish
<b>DTS-01AC:</b> 7.3 in x 3.8 in x 1.7 in	UL 94V-0 (indoor) and UL 94-5VA (outdoor) flame retardant PBT/PC blend thermoplastic	UL1863	Designed to meet GR-049-CORE, GR-2898-CORE, GR-3125-CORE, UL1863. Adapter exceeds the requirements of GR-326-CORE.	Light Gray
<b>SUC-02-24-C:</b> 24.6 in x 2.2 in x 1.1 in				

## Ordering Information

Part Number	Description
DTS-0000	Drop Terminal System empty for slack storage, two rubber grommets (bottom and rear wall), cable tie and base, snap-close door with captive screws
DTS-01XC	Drop Terminal System with SC simplex adapter holder (no adapter), two rubber grommets (bottom and rear wall), cable tie and base, fiber router, snap-close door with captive screws.
DTS-01AC	Drop Terminal System 1port SC-APC, two rubber grommets (bottom and rear wall), cable tie and base, dual ground block, fiber routers, snap-close door with captive screws.
DTS-04AC	Drop Terminal System 4port SC-APC, two rubber grommets (bottom and rear wall), cable ties and bases, internal/external ground lug, snap-close door with captive screws.
SUC-02-24-C	U-Channel 2-inch by 2 foot Stackable System for Drop Terminal System (or stand-alone)

These products may be protected by one or more patents • For further information, please visit: [www.ppc-online.com/patents](http://www.ppc-online.com/patents)

[customerservice@ppc-online.com](mailto:customerservice@ppc-online.com) • 1-800-800-6652 • [www.ppc-online.com](http://www.ppc-online.com)