

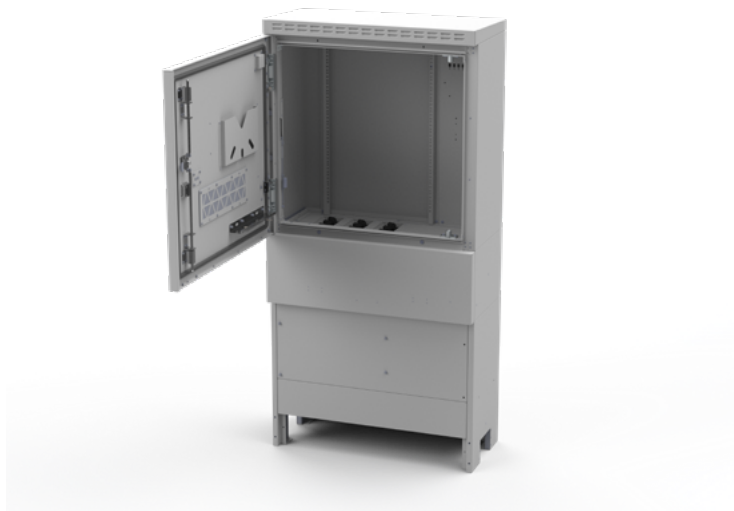
Street Cabinet SC9

(steel/aluminium)



Features & Benefits

- Capacity of up to 16 height units (16U)
- Slots for PPC USC splitter cassettes included
- Cable entry via 12 PG cable glands (other variants configurable)
- Preconfigured rails for mounting up to 25 ducts Ø14mm (other variants configurable)
- Innovative chamber for cable storage
- Modular construction fast and simple installation
- RC2 compliant steel/aluminium cabinet
- Dual wall aluminum, Robust design
- Excellent passive heat conductivity
- Powder coating RAL 7035, RAL 7016, RAL 6009
- Optional electronic locking system



Overview

The PPC SC9 is an outdoor cabinet system that provides maximum protection of customer's equipment against vandalism and extreme weather conditions.

This cabinet is the ideal solution for installations hosting active and passive telecom equipment.

The PPC SC9 cabinet is designed to be as compact as possible so that the aesthetic impact on the 'streetscene' is kept to a minimum. The cabinet is only 900mm wide and the powder coating in grey RAL 7035 (alternatively RAL 7006 or RAL 6009) blends sympathetically with the environment.

Technical Data

Dimensions

Upper housing dimensions (w) x (h) x (d) <i>mm</i>	Plinth dimensions (w) x (h) x (d) <i>mm</i>	Base dimensions (w) x (h) x (d) <i>mm</i>
900 x 900 x 430	900 x 299 x 430	900 x 660 x 390

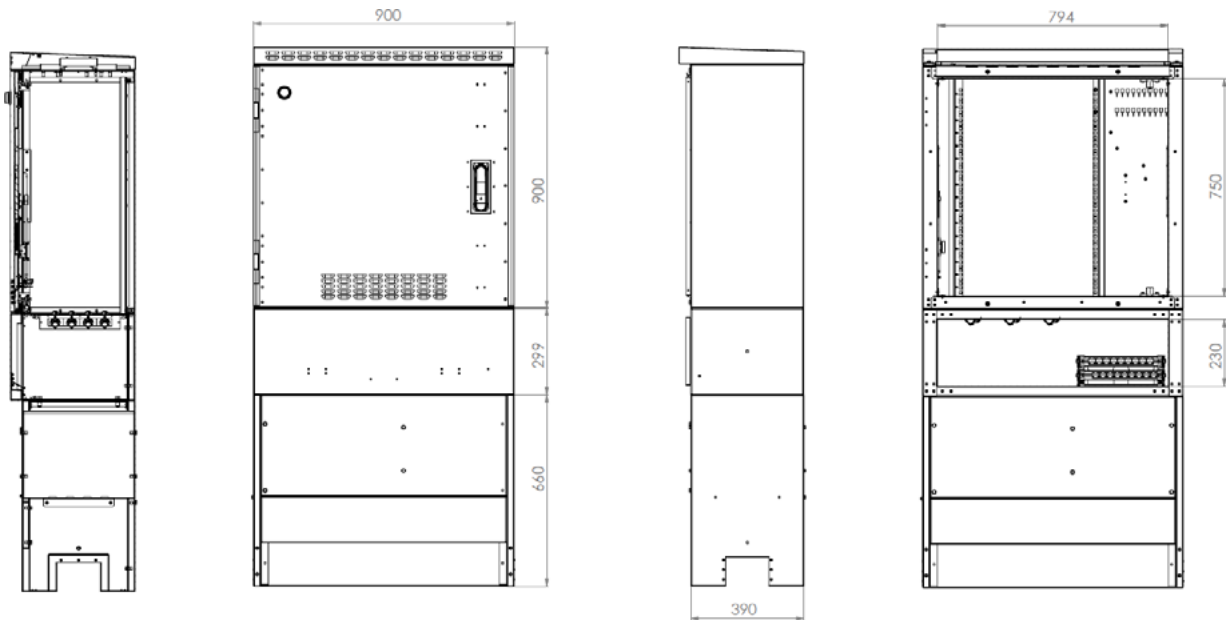
Mechanical data cont.

Material			Weight (empty) <i>kg</i>	Colour options <i>(Unit)</i>
upper housing	pedestal	lower base		
Aluminum alloy sheet, EN AW-5754 H22	MAGNELIS steel sheet, S320GD+ZM310-A-CE	MAGNELIS steel sheet, S320GD+ZM310-A-CE	83 upper housing: 35 pedestal: 28 lower base: 20	Grey RAL 7035, An- thracite Grey RAL 7016 semi-gloss granulated or Fir Green RAL 6009

Street Cabinet SC9 (steel/aluminium)



Technical Drawing



Ordering Information

Description	Part Number
Street Cabinet SC9 (steel/aluminium), RAL 7035 (Grey)	SBKB000DA
Street Cabinet SC9 (steel/aluminium), RAL 7016 (Antracite Grey)	SBKB000DAR7016
Street Cabinet SC9 (steel/aluminium), RAL 6009 (Fir Green)	SBKB000DAR6009