

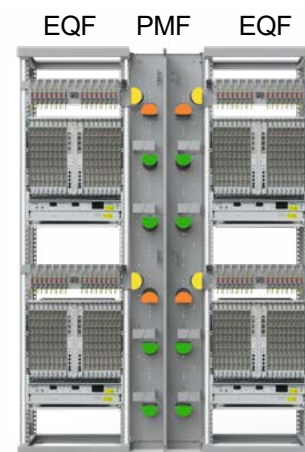
Racks and Cabinets

EQF Equipment Frame



Features & Benefits

- Robust steel construction
- Open frame design for fast and easy access to equipment
- Adjustable vertical rails for different equipment depths
- Numbered identification strips on vertical rail for clear placement of equipment and accessories
- ETSI rails (500mm pitch between fixings)
- 84 metric positions per 2200mm rack
- Integrated cable overlength management
- Flexible cable routing mandrels for different cable paths
- Optional harness manager for managing harness cables into the vertical equipment blades



Overview

The EQF is a purpose-made rack designed to accommodate high density switches DSLAMs used in FTTH PON networks. The rack can be made as a stand-alone solution, or it can be made as a 'side-by-side' system with integrated cable management in the middle. Each rack has capacity for up to two high-density DSLAM switches including the associated baffle plates required to deflect warm air away from the switch.

In many cases, the EQF racks will be deployed in small POP buildings alongside high density optical distribution frames or splitter racks. These ODF's then provide the necessary connection to 'Feeder Cables' connecting aggregation street cabinets further down the network. Harness cables can enter the EQF rack from either the top or the bottom of the rack and cable slack mandrels can be used to store excess cable between the EQF racks and the ODF racks.

Technical Data

EQF rack dimensions		EQF PMF rack dimensions	
<i>mm (width x depth x height)</i>		<i>mm (width x depth x height)</i>	
600 x 600 x 2200		406 x 600 x 2200	

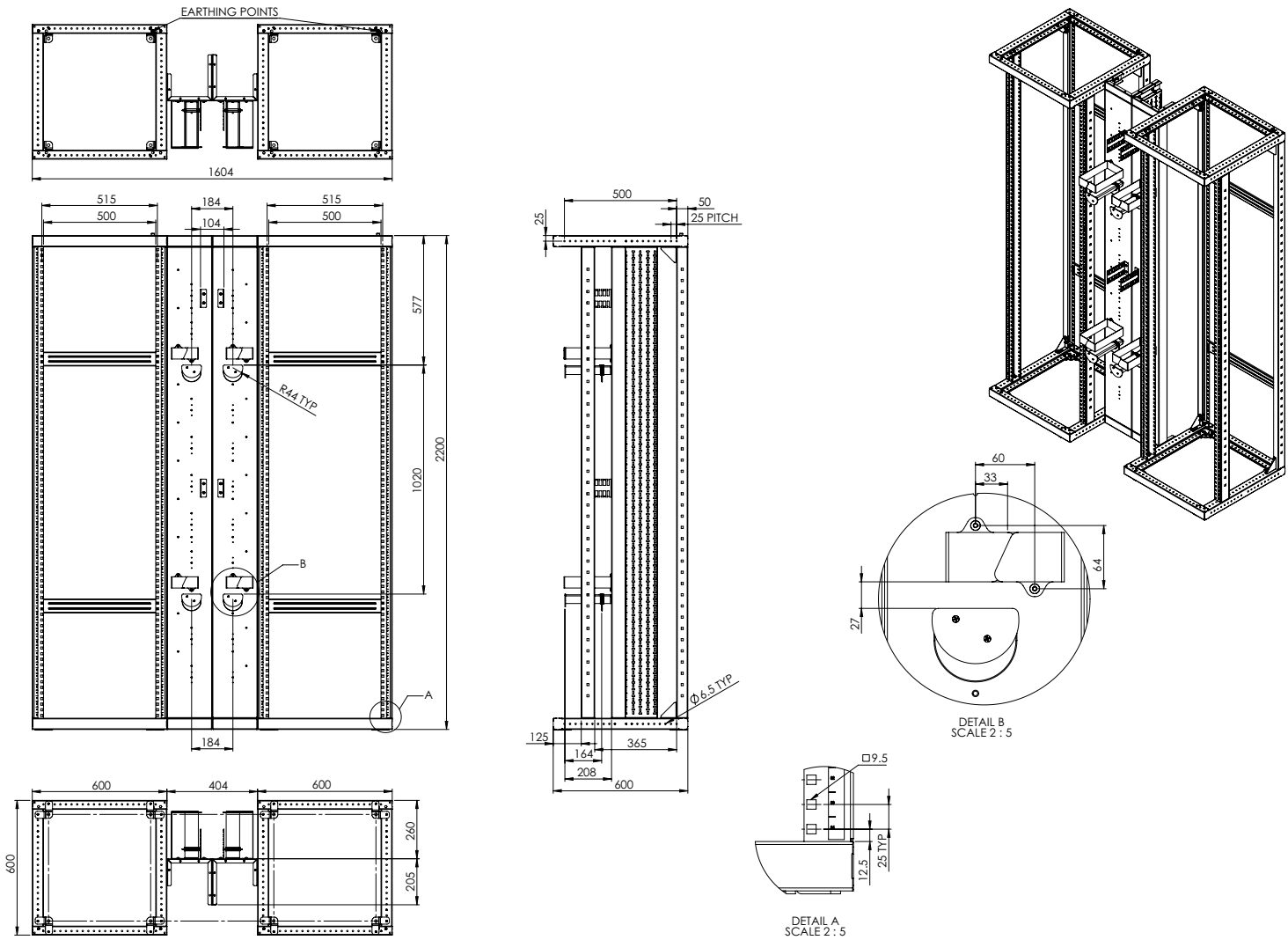
Material	Colour	ETSI fixing positions
Steel powder coated	Light Grey RAL 7035	84 (numbered top down)

Racks and Cabinets

EQF Equipment Frame



Technical Drawing



Ordering Information

Description	Part Number
ETSI Fiber management suite with 3 racks (two equipment racks + middle cable management rack), assembled, Grey RAL 7035	FRSE0400002273-002
ETSI Fiber management suite with 3 racks (two equipment racks + middle cable management rack), non-assembled, Grey RAL 7035	FRSE0300002273-002
ETSI Fiber management suite with 2 racks (one equipment rack + cable management rack on the right), assembled, Grey RAL 7035	FRSE0200002272-002
ETSI Fiber management suite with 2 racks (one equipment rack + cable management rack on the right), non-assembled, Grey RAL 7035	FRSE0100002272-002