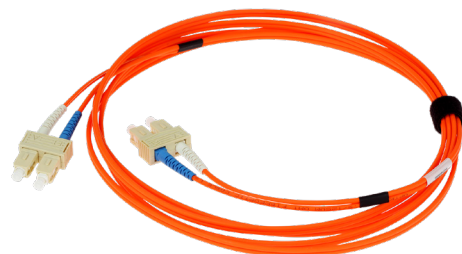


Armored Patchcord



Features & Benefits

- Rugged and flexible
- Ideal for harsh environment
- Available with all types of connectors and fibers
- 100% factory terminated and tested
- Individual test report and traceability ID number
- Single or double armored



Overview

PPC's armored patch cords are specifically designed for last-mile fiber routing applications. The flexible steel tube inside provides reliable protection from physical damage and doesn't allow the cable to be bent below the recommended bending radius. For additional protection, a double armored version is available, which comprises of a steel mesh wire immediately underneath the outer sheath of the cable. All PPC cable assemblies are supplied with individual test report for Insertion Loss and Return Loss (RL for single-mode only).

Technical Data

Mechanical Data

Specification	Value			
Fiber count and cable type	1F/2F Single armor, simplex	1F/2F Double armor simplex	2F Zip cord single armor	4F Double armor, simplex
Outer diameter	3.0 mm	3.2 mm	5.7 mm	6.5 mm
Cable weight	18 kg/km	25 kg/km	38 kg/km	58 kg/km
Bend radius	Dynamic - 20D/ Static - 10D			
Tensile strength	Short term: 400N, Long term: 200N			
Crush Resistance	Short term: 5000N/100mm, Long term: 3000N/100mm			
Tube/ mesh material	Stainless steel			

Optical Data

Specification	Values
Fiber type	OS2, G657A1, G657A2, G657B2, G657B3, OM1, OM2, OM3, OM4
Connector Insertion Loss	≤0.3dB for SC, LC, FC, ST; ≤0.7dB for MTRJ
Connector Return Loss	≥50 dB UPC, ≥60 dB APC
PDL	≤0.2 dB

Environmental Data

Specification	Values
Operating temperature	-40°C to 85°C (-40°F to 185°F)
Free of halogen	Yes (when LSZH cable is specified)
2011/65/EC RoHS	Fully compliant

Armored Patchcord



Technical Drawing

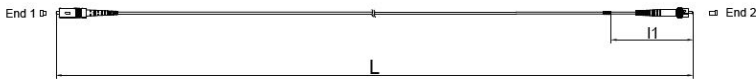


Fig. 2: Simplex patchcord schematic

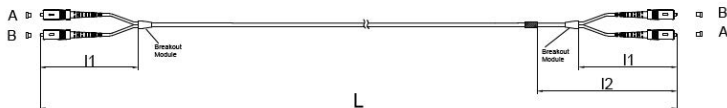
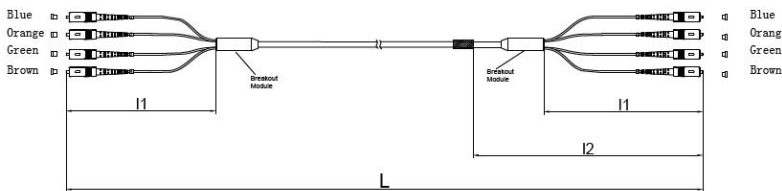


Fig. 3: 2F patchcord schematic



Ordering Information

AP S S C U 3 2 1 0 0 5 S C U 0 1 0 W T P
1 2 3 4 5 6 7 8 9 10 11

1 ARMOR TYPE

S = Single
D = Double

2 CONNECTOR A

SC = SC connector
ST = ST connector
LC = LC connector
FC = FC connector
MT = MTRJ
E2 = E2000

3 CONNECTOR A FINISH

P = PC
U = UPC
A = APC

4 CABLE DIAMETER

30 = 3.0 mm
32 = 3.2 mm
57 = 5.7 mm
65 = 6.5 mm

5 FIBER COUNT

1 = 1 fiber
2 = 2 fibers
4 = 4 fibers

6 FIBER TYPE

OM1 = OM1
OM2 = OM2
OM3 = OM3
OM4 = OM4
OS2 = SM G652D
7A1 = SM G657A1
7A2 = SM G657A2
7B2 = SM G657B2
7B3 = SM G657B3

7 CONNECTOR B

SC = SC connector
ST = ST connector
LC = LC connector
FC = FC connector
MT = MTRJ
E2 = E2000

8 CONNECTOR B FINISH

P = PC
U = UPC
A = APC
Blank for pigtail

9 CABLE LENGTH

010 = 1.0 m
015 = 1.5 m
025 = 2.5 m

10 CABLE COLOR

WT = White
BK = Black
BL = Blue
GY = Grey
OR = Orange

11 JACKET MATERIAL

P = PVC
L = LSZH
O = OFNR