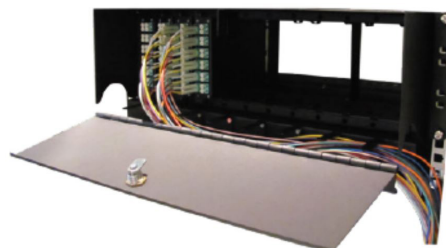


# HD 3U Modular LGX Patch Panel



## Features & Benefits

- Robust and reliable
- Uses industry-approved 19" design and LGX style modules
- Flexible, multi-functional solution for different types of connectivity
- High Density combined with ease of installation and maintenance
- No disturbance of existing connections during installation or re-work
- Recessable mounting brackets



## Overview

PPC's High Density LGX modular patch panels are a part of PPC's comprehensive MT modular connectivity system for central offices. To enable the optimum balance between accessibility and density, a range of 1U and 3U fixed and sliding modular solutions are available. All panels are based on the IEC 60297-3 standard.

The 3U modular panel has 12 slots and provides a high-dense solution. It's ideal in situations where floor and rack space utilization is critical and moves, adds and changes (MACS) are limited. Although it's a high-density solution, the 3U chassis is designed with finger access in mind, striking the optimum balance between space utilization and access. This chassis enables a maximum of 12 cassettes or adapter plates to be installed, offering up to 144 SC or 288 LC connections in 1U. In order to improve the physical security, a lockable metal cover can be installed. The cover also includes a 1U protected cable management duct.

## Application

- Central Office and telecommunication networks
- High density connection between active equipment and distribution architectures
- Gigabit Ethernet, Local Area Networks, Wide Area Networks, Storage Area Networks
- Backbone links for CATV and video transmission

## Technical Data

### Mechanical Specification

Specification	High Density 3U	Cover for 3U
Dimensions (HxWxD)*	133 mm x 435 mm x 200 mm	171 mm x 435 mm x 83 mm
Packed (HxWxD)	160 mm x 460 mm x 230 mm	200 mm x 460 mm x 150 mm
Weight	4.2 kg	1.8 kg
Packed	4.5 kg	2.0 kg
LGX modules (max)	12	N/A
Material	CRCA, powder coated	
Color	Black RAL 9005 (standard), Grey RAL 7032 or RAL 7035 (optional)	

\*Excluding mounting brackets

# HD 3U Modular LGX Patch Panel

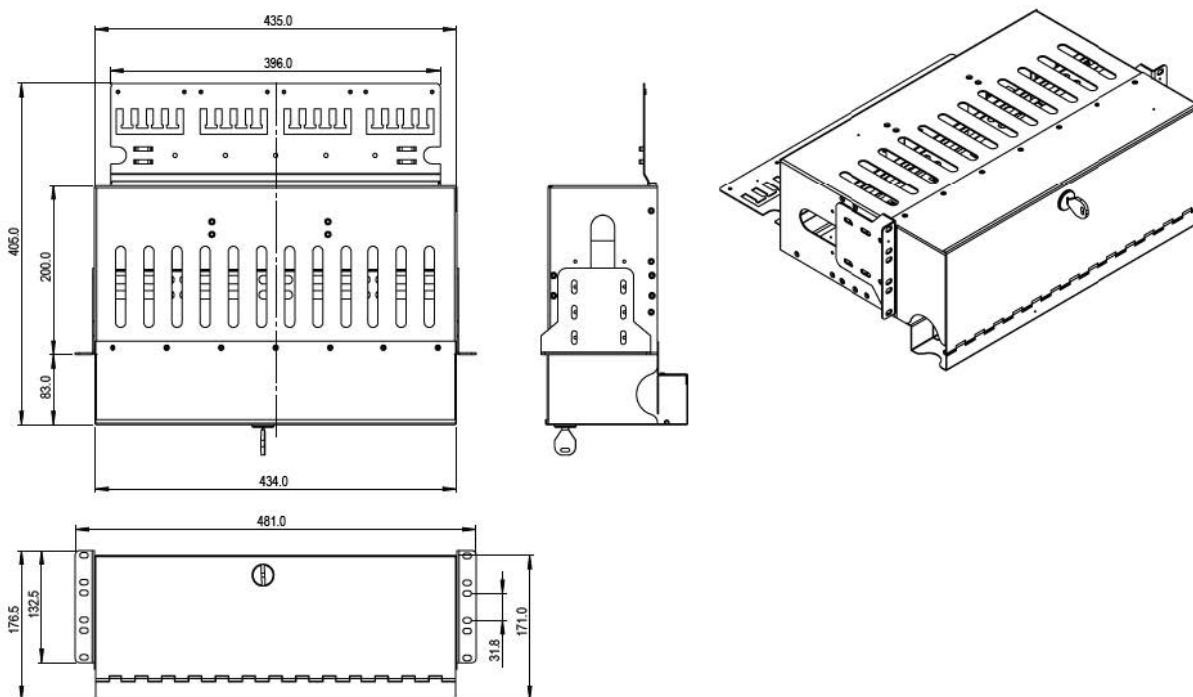


## Technical Data

### Environmental Data

Specification	Value
Operating temperature	-10 °C to 60 °C (14 °F to 140 °F)
2011/65/EC RoHS	Fully compliant

## Technical Drawing



## Ordering Information

Part Number	Description
ODCPF312BK	Fixed 3U High density MT Modular patch panel for 12 modules, black
ODCPF3CBK	Cover for Fixed 3U High density MT Modular patch panel, black
ODCPG45BK	Gland holder for all MT panels (including gland for 4 cables up to 5mm)