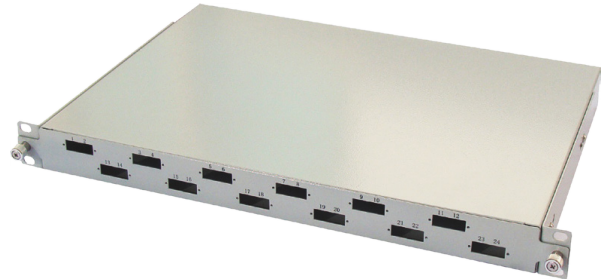


Telescopic Patch Panel Unloaded



Features & Benefits

- Fast and easy access to front and rear connectors
- 1U, 2U, 3U, 4U design
- Telescopic tray can be fully ejected for easy splicing
- 300mm depth for extra storage
- High quality locking system
- Angled cable entries to maintain bend radius
- Strength member lug for securing the central strength member
- Splice tray for terminating incoming fibers to pigtails
- Staggered port design for easy patching
- Port identification on front panel



Overview

PPC's Telescopic Fiber Optic Patch Panel offers excellent flexibility during mounting and installation, and is mainly used for distribution and splicing of feeder or distribution fiber cables. The patch panel features an improved staggered adapter design for easy access to the connectors and patchcords during maintenance and fiber patching.

The patch panel has a sliding telescopic tray to facilitate easy access for maintenance and allow the tray to be released from the patch panel for maintenance. The telescopic patch panel is constructed of high-quality steel and is powder coated, making it sturdy and durable.

Application

- LAN
- FTTx/Telecommunications
- CATV

Technical Data

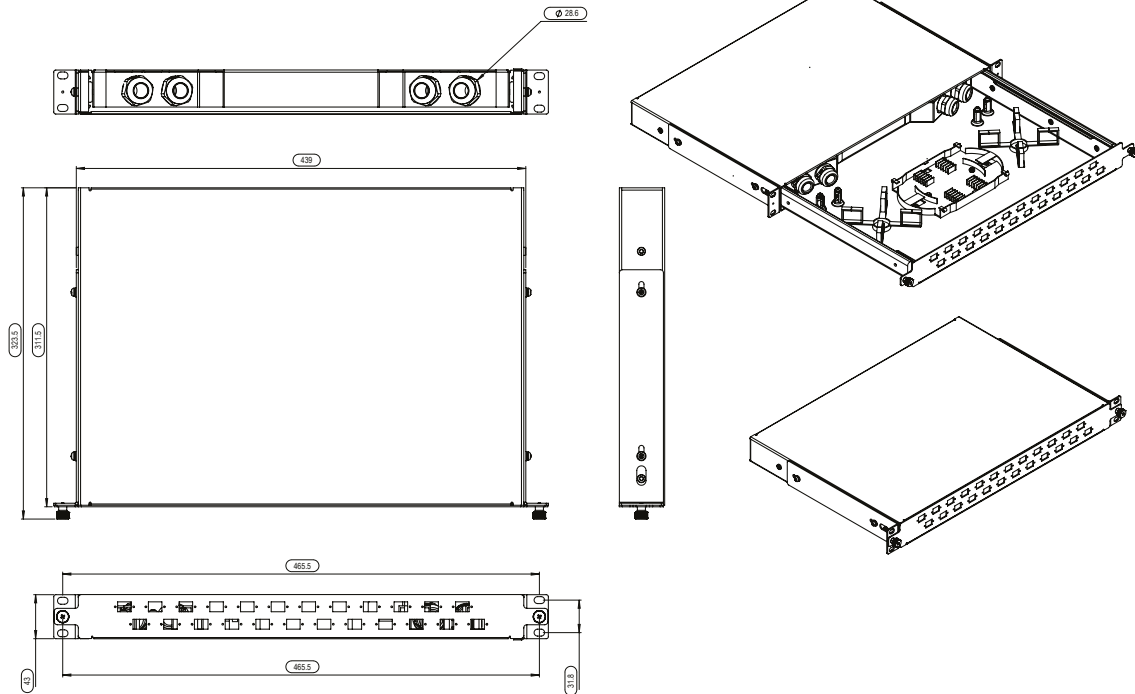
Mechanical Data

Part Number	Description
Dimensions (W x D x H)	465.5 mm x 323.5 mm x 43 mm (18.3 in x 12.7 in x 1.7 in)
Material	Galvanized Steel, 1.2mm
Powder Coated	RAL 7032, RAL 7035
Panel Dimensions (W x D x H)	1U - 43 mm x 439 mm x 311.5 mm (1.7 in x 17.3 in x 12.3 in) 2U - 88 mm x 439 mm x 311.5 mm (3.5 in x 17.3 in x 12.3 in) 3U - 132 mm x 439 mm x 311.5 mm (5.2 in x 17.3 in x 12.3 in) 4U - 177 mm x 439 mm x 311.5 mm (7.0 in x 17.3 in x 12.3 in)
Cable Entry	1U PG 16, 2 Ports 2U PG 16, 2 Ports 3U PG 16, 2 Ports 4U PG 21, 2 Ports
Adapter	SC Duplex, SC Simplex, ST/FC
Sliding Mechanism	Telescopic Rails

Telescopic Patch Panel Unloaded



Technical Drawing



Ordering Information

Part Number	Description
FP-SLTR-SCSX-024-1x	Telescopic 24-way Fiber Patch Panel, 1U 24 SC Simplex cut-out
FP-SLTR-SCDX-012-1x	Telescopic 24-way Fiber Patch Panel, 1U 12 SC Duplex cut-out
FP-SLTR-DCSX-024-1x	Telescopic 24-way Fiber Patch Panel, 1U 24 ST/FC Simplex, D cut-out
FP-SLTR-SCSX-048-2x	Telescopic 48-way Fiber Patch Panel, 2U 48 SC Simplex cut-out
FP-SLTR-SCDX-024-2x	Telescopic 48-way Fiber Patch Panel, 2U 24 SC Duplex cut-out
FP-SLTR-DCSX-048-2x	Telescopic 48-way Fiber Patch Panel, 2U 48 ST/FC Simplex, D cut-out
FP-SLTR-SCSX-072-3x	Telescopic 72-way Fiber Patch Panel, 3U 72 SC Simplex cut-out
FP-SLTR-SCDX-036-3x	Telescopic 72-way Fiber Patch Panel, 3U 36 SC Duplex cut-out
FP-SLTR-DCSX-072-3x	Telescopic 72-way Fiber Patch Panel, 3U 72 ST/FC Simplex cut-out
FP-SLTR-SCSX-096-4x	Telescopic 96-way Fiber Patch Panel, 4U 96 SC Simplex cut-out
FP-SLTR-SCDX-048-4x	Telescopic 96-way Fiber Patch Panel, 4U 48 SC Duplex cut-out
FP-SLTR-DCSX-096-4x	Telescopic 96-way Fiber Patch Panel, 4U 96 ST/FC Simplex cut-out

Substitute x with W for RAL 7035 or G for RAL 7032 at the end of the Part Code.