

Patch Cords

Single-Mode and Multi-Mode



Features & Benefits

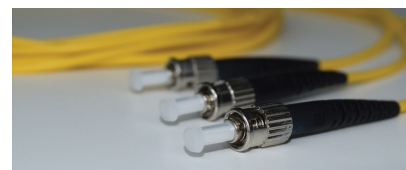
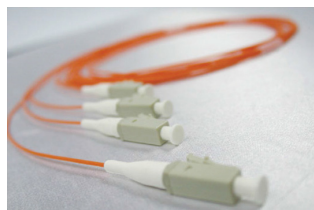
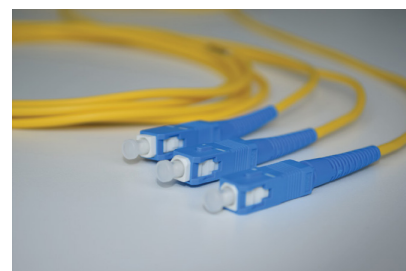
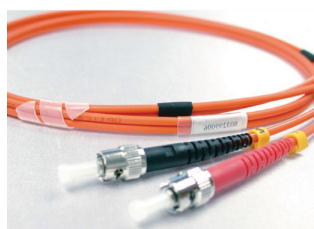
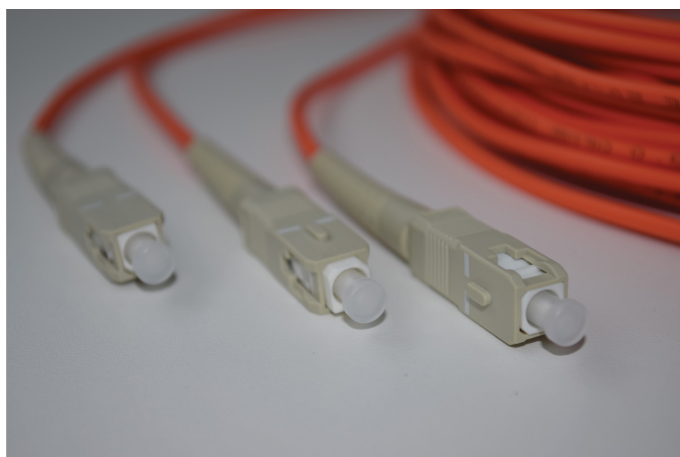
- Simplex, duplex and unicable
- Standard or custom lengths
- APC or UPC polish
- Sheath LSZH/OFNR (single) or PVC/LSZH (multi)
- Exceeds fiber optic industry standards
- 100% hand tested & guaranteed
- Delivered in customer-specified lengths

Multi-Mode Options

- OM-1 (62.5/125), grey
- OM-2 (50/125), orange
- OM-3 (50/125), aqua
- OM-4 (50/125), aqua

Product Description

- All ceramic ferrules for maximum optical and mechanical performance
- All patch cords are 100% optically inspected and tested with individual labeling
- A variety of fiber and cable types available
- A variety of boot styles and colors available
- Custom print legends and jacket colors available EIA/TIA compliant



Technical Data

Mechanical Data

Connector Types	SC	LC	FC	ST
Fiber Type	62.5/125m	9/125m		50/125m
Max. Insertion Loss	≤0.4dB	≤0.3dB		≤0.4dB To
Typ. Insertion Loss	≤0.3dB	≤0.2dB		≤0.3dB
Typ. Return Loss	≥35dB	PC ≥ 45dB UPC ≥ 55dB APC ≥ 60dB		≥35dB
Cable Retention (900um)	2lbs	2lbs		2lbs
Matung Durability (1000 cycles)	<0.2dB	<0.2db		<0.2dB
Ferrule Material	Ceramic	Ceramic		Ceramic
Housing Material	Composite	Composite		Composite
Operating Temperature	-40°C to 80°C (-40°F to 176°F)			

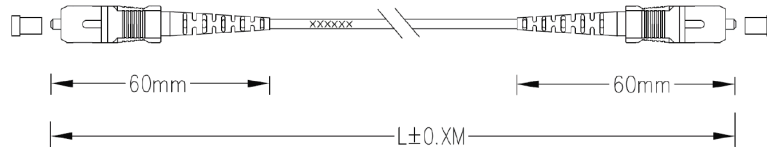
This product may be protected by one or more patents • For further information, please visit: www.ppc-online.com/patents

Patch Cords

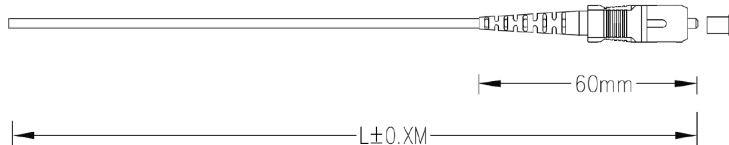
Single-Mode and Multi-Mode



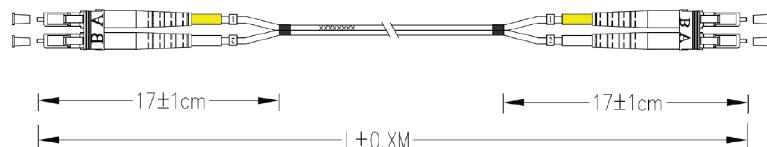
Simplex



Pigtail



Duplex



Ordering Information: (Example Part Number) SJS4A7A2AY003M

Cable Type		Assembly Type		Cable Configuration		Connector 1 / Connector 2			
S	Single-Mode	J	Jumper	S	Simplex	1	FC	A	APC
M	Multi-Mode	P	Pigtail	D	Duplex Cable	2	ST	U	UPC
				U	Uni Cable	4	SC	C	PC (Multi Mode)
						6	E-2000	NC	No Connector
						7	LC	P	UPC with pull tab
						8	MU	T	APC with pull tab
						MT	MTP		
						MP	MPO		

Cable Size		Fiber Type		Color		Length	Measurement		Boot Options	
U	1.2mm	MM		Yellow	Y	100	F	Feet	Blank	Straight, Duplex Clipped Per End
H	1.6mm	1	OM1	Orange	O		M	Meters	90	Angle 90 Degree
2	2mm	2	OM2	Aqua	A				45	Angled 45 Degree
3	3mm	3	OM3	Black	B				SS	Straight Short/Connector
9	900um	4	OM4	Red	R				NC	Duplex Not Clipped Per End
		5	OM5	Green	G					
		SM		White	W					
		S	652D- not BIF	Blue	BL					
		A	657A1- BIF 10mm	Lime Green	LG					
		N	657A2- BIF 7.5mm							
		B	657B3- BIF 5mm							

This product may be protected by one or more patents • For further information, please visit: www.ppc-online.com/patents

6176 E. Molloy Rd. East Syracuse, NY 13057 U.S.A. • customerservice@ppc-online.com • 1-800-800-6652 • +1 315-431-7200 • www.ppc-online.com