

FTTx Outdoor Series Splice & Play Cabinets



Features & Benefits

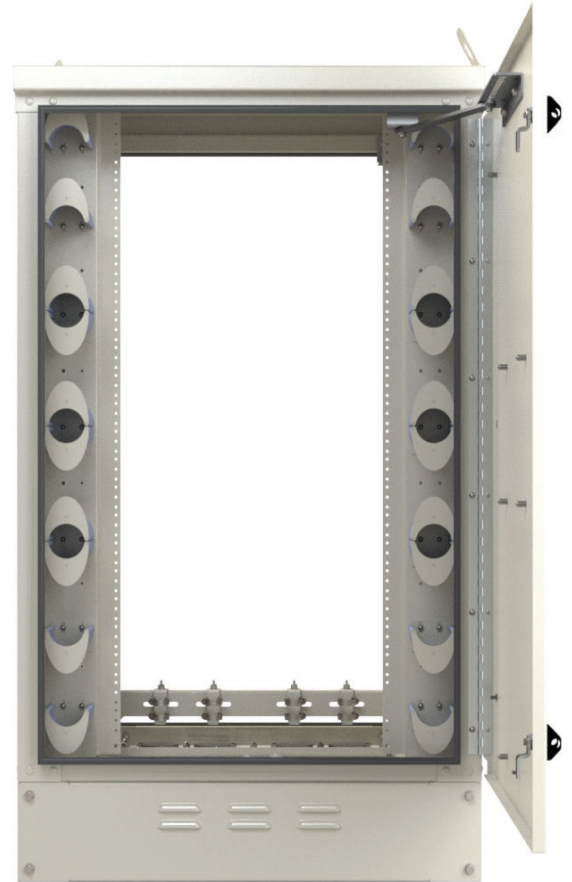
- Splice & Play - reduces install time and lowers CAPEX
- Fully customizable and tailor-fit to meet your needs
- Open-source and non-proprietary components
- All fiber scoped and cleaned to exceed IEC 61300-3-35
- Sizes to fit any application

Features

- Households passed - up to 864
- Fixed 19" EIA rack, 14RU - 30RU
- Pre-stubbed with G657 A1 fiber pigtailed
- Patch panel or direct connect configurations
- LGX® style snap-in splitter shelves
- LGX® style snap-in passives
- Front and rear doors with wind-stop and padlock hasps
- Express cable entry
- Removable plinth covers
- Environmental gasket seals for all access points
- Optional universal pole / wall mount bracket
- Heavy-duty aluminum construction
- Durable powder coat paint finish

Splice & Play Cabinets

- Splice & Play solution increases speed to market
- Saves CAPEX through reduced need for labor
- Simplify the ordering process with all components in a single part code
- Streamline material management
- Reduce skill level required for installation
- Eliminate risk of failure due to poor end face cleanliness



Overview

PPC FTTx Outdoor Series Fiber Distribution Cabinets are engineered to support any fiber network. The FTTx cabinets are fully customizable using open source components, and come in sizes from 14U to 30U. Available pre-stubbed and fully integrated, see how Splice & Play cabinets can reduce costs and increase your speed to revenue.

Optional Equipment

- Rack-mount fiber optic passives
- LGX® style snap-in fiber optic passives
- WDM, CWDM, DWDM & MUX/DeMUX devices
- Fiber optic pigtailed: 36 - 144 core
- MPO jumpers and patch panels
- Fiber cross connect and distribution patch panels
- Active splitters for OBI elimination

This product may be protected by one or more patents • For further information, please visit: www.ppc-online.com/patents

customerservice@ppc-online.com • 1-800-800-6652 • www.ppc-online.com

FTTx Outdoor Series Splice & Play Cabinets

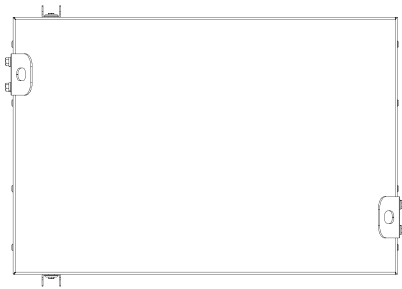


Technical Data

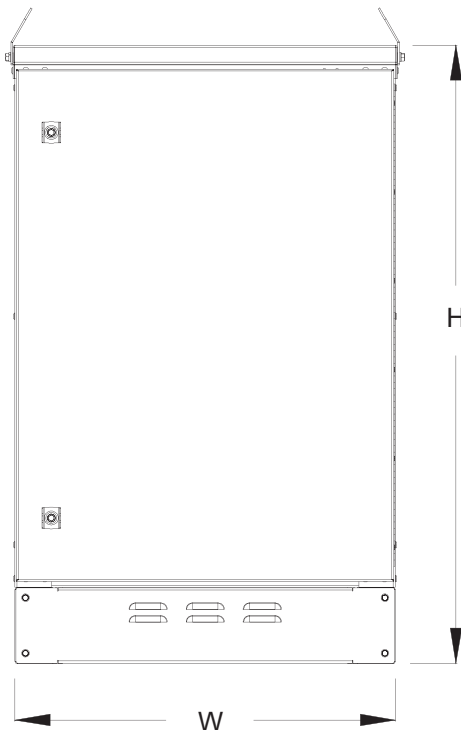
Dimensions

14U (H x W x D)	18U (H x W x D)	22U (H x W x D)	26U (H x W x D)	30U (H x W x D)
mm (in)	mm (in)	mm (in)	mm (in)	mm (in)
914 x 762 x 457 (36 x 30 x 18)	1067 x 762 x 457 (42 x 30 x 18)	1245 x 762 x 457 (49 x 30 x 18)	1422 x 762 x 457 (56 x 30 x 18)	1600 x 762 x 457 (63 x 30 x 18)

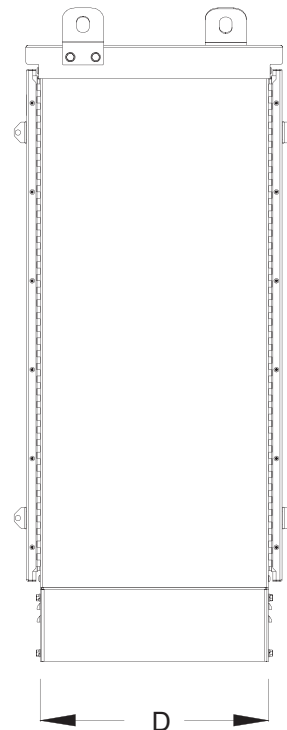
Mechanical Drawing



Top View



Front View



Side View

rev1_06092020

This product may be protected by one or more patents • For further information, please visit: www.ppc-online.com/patents

customerservice@ppc-online.com • 1-800-800-6652 • www.ppc-online.com